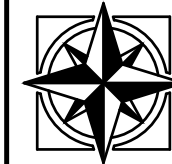
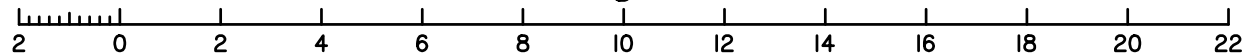


Compaction of the fill will be done in accordance with Australian Standard AS 3798-2007, and the level of Inspection during earthworks specified is Level 1 in accordance with AS1289 testing of soils for engineering purposes and AS 3798 guidelines for earthworks for commercial and residential developments.



East Coast Surveys (Aust)
P.O. BOX 168 Capalaba QLD 4157
Ph (07) 3823 1029 Fax (07) 3823 2691
Email info@eastcoastsurveys.com.au

Local Authority: Brisbane City Council
Authority Ref. No: A004060334
RP Description: Lot 1 on RP54123

Parish: Yeerongpilly
County: Stanley
Level Datum: AHD(der)
Origin:
Horizontal Datum: RP54123
Contour Interval: 0.25m

Allotment Details:

This plan shows details of proposed allotment 49 on Plan of Development XXXXXX in accordance with the Subdivision Application approved by Brisbane City Council on XX XXXXXXXXXX, XXXX subject to conditions.

Notes:

All dimensions and areas are subject to final registration of the survey plan.

The services, design contours and fill hatching shown hereon are from design drawings still to be approved by council.

Legend:

- Sewer Manhole
- Sewer Main
- Stormwater MH
- Stormwater Grate
- Drainage Swug
- Stormwater Gully
- Water Line
- Electrical Line UG
- Electrical Line AG
- Power Pole
- Telecom Line
- Telecom Pit
- Building Envelope
- Fence
- Stage Bdy
- Concrete
- Tree
- Retaining Wall
- Design Finished Surface Contour
- Design Fill Depth Contour

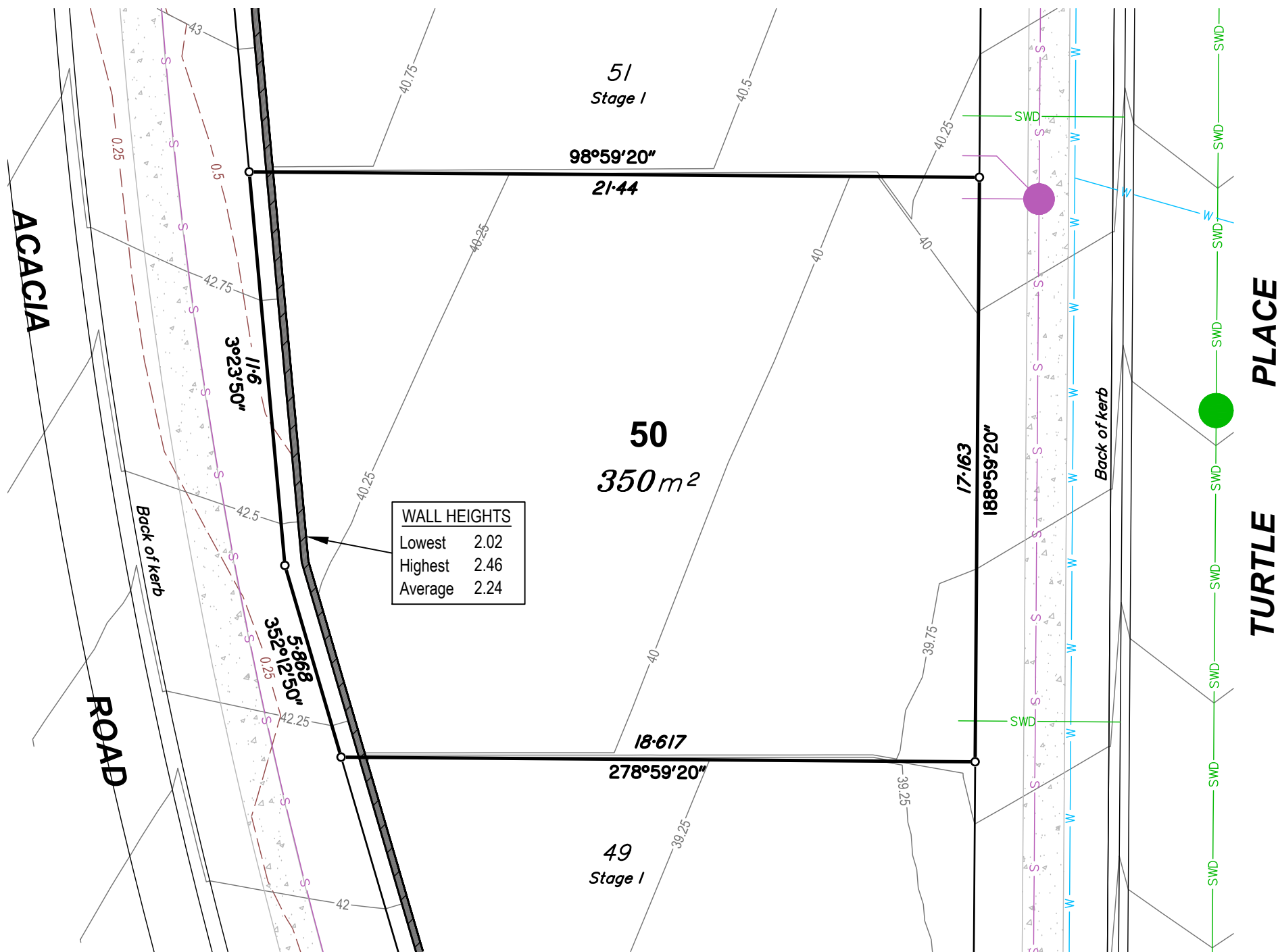
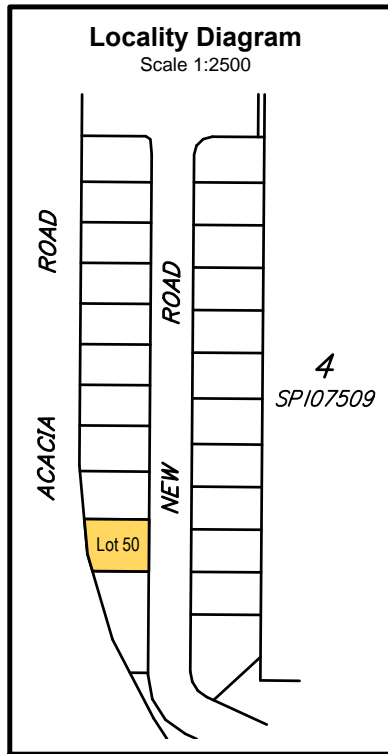
Stage 1
72 Acacia Road,
Karawatha

DISCLOSURE PLAN
LOT 49 ON SP280048

CLIENT
Solido Investments Nominees 1918 Pty Ltd

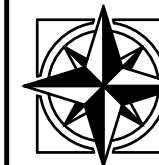
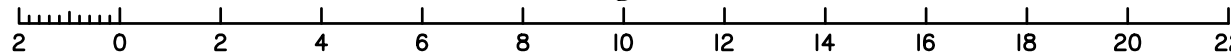
Issue	Description	Date	Appd.
E	Staging Revised	28/08/19	PR
F	Lots & Services updated	23/03/20	PR
G	Lot 74 updated	24/09/20	PR
H	Lot dimensions to MGA	27/7/21	PR

DRAWING NUMBER 4639-49	SCALE 1:200 (A3)
---------------------------	---------------------



Compaction of the fill will be done in accordance with Australian Standard AS 3798-2007, and the level of Inspection during earthworks specified is Level 1 in accordance with AS1289 testing of soils for engineering purposes and AS 3798 guidelines for earthworks for commercial and residential developments.

Scale 1:150 - Lengths are in Metres.



East Coast Surveys (Aust)

P.O. BOX 168 Capalaba QLD 4157
Ph (07) 3823 1029 Fax (07) 3823 2691
Email info@eastcoastsurveys.com.au

Local Authority: Brisbane City Council
Authority Ref. No: A004060334
RP Description: Lot 1 on RP54123

Parish: Yeerongpilly
County: Stanley
Level Datum: AHD(der)
Origin:
Horizontal Datum: RP54123
Contour Interval: 0.25m

Allotment Details:
This plan shows details of proposed allotment 50 on Plan of Development XXXXXX in accordance with the Subdivision Application approved by Brisbane City Council on XX XXXXXXXXXX, XXXX subject to conditions.

Notes:
All dimensions and areas are subject to final registration of the survey plan.
The services, design contours and fill hatching shown hereon are from design drawings still to be approved by council.

Legend:

	Sewer Manhole		Building Envelope
	Sewer Main		Fence
	Stormwater MH		Stage Bdy
	Stormwater Grate		Concrete
	Drainage Swug		Tree
	Stormwater Gully		Retaining Wall
	Water Line		Design Finished Surface Contour
	Electrical Line UG		Design Fill Depth Contour
	Electrical Line AG		
	Power Pole		
	Telecom Line		
	Telecom Pit		

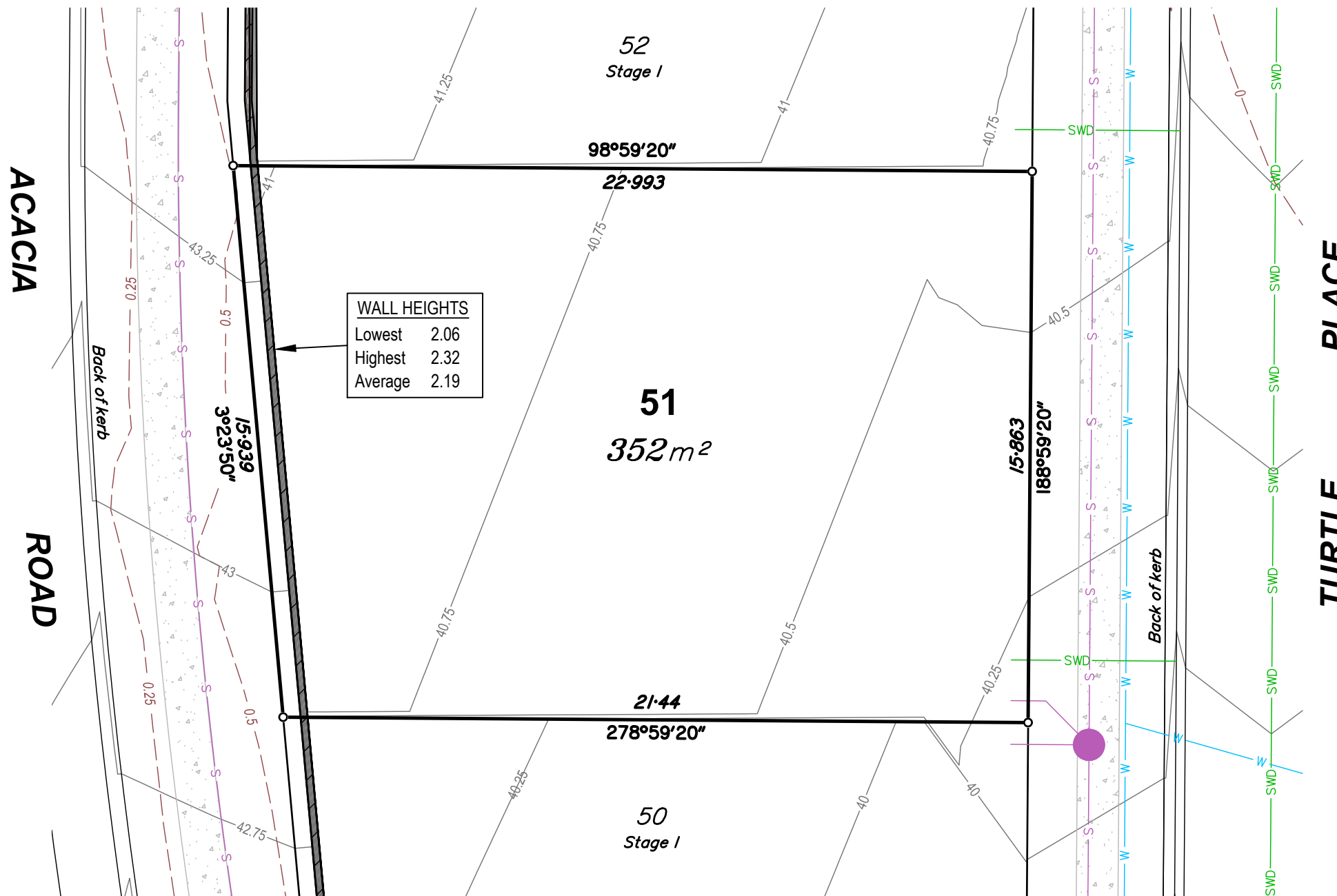
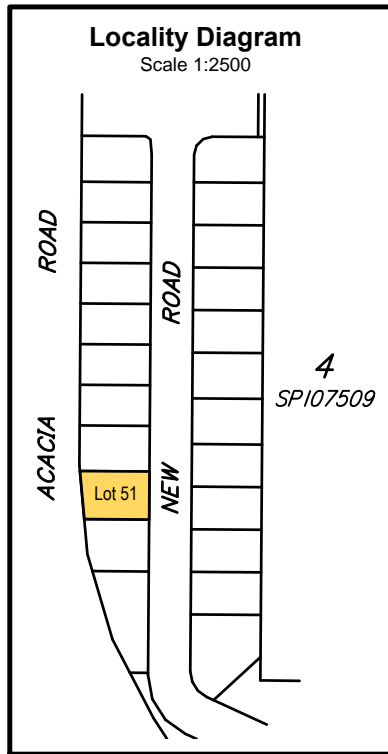
Stage 1
72 Acacia Road,
Karawatha

DISCLOSURE PLAN
LOT 50 ON SP280048

CLIENT
Solido Investments Nominees 1918 Pty Ltd

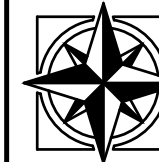
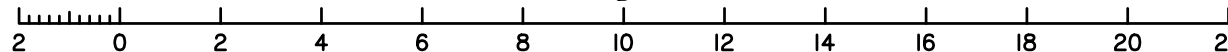
Issue	Description	Date	Appd.
E	Staging Revised	28/08/19	PR
F	Lots & Services updated	23/03/20	PR
G	Lot 74 updated	24/09/20	PR
H	Lot dimensions to MGA	27/7/21	PR

DRAWING NUMBER: 4639-50
SCALE: 1:200 (A3)



Compaction of the fill will be done in accordance with Australian Standard AS 3798-2007, and the level of Inspection during earthworks specified is Level 1 in accordance with AS1289 testing of soils for engineering purposes and AS 3798 guidelines for earthworks for commercial and residential developments.

Scale 1:150 - Lengths are in Metres.



East Coast Surveys (Aust)
Pty. Ltd. ACN 111 434 025

P.O. BOX 168 Capalaba QLD 4157
Ph (07) 3823 1029 Fax (07) 3823 2691
Email info@eastcoastsurveys.com.au

Local Authority: Brisbane City Council
Authority Ref. No: A004060334
RP Description: Lot 1 on RP54123

Parish: Yeerongpilly
County: Stanley
Level Datum: AHD(der)
Origin:
Horizontal Datum: RP54123
Contour Interval: 0.25m

Allotment Details:

This plan shows details of proposed allotment 51 on Plan of Development XXXXXX in accordance with the Subdivision Application approved by Brisbane City Council on XX XXXXXXXXX, XXXX subject to conditions.

Notes:

All dimensions and areas are subject to final registration of the survey plan.

The services, design contours and fill hatching shown hereon are from design drawings still to be approved by council.

Legend:

	Sewer Manhole		Building Envelope
	Sewer Main		Fence
	Stormwater MH		Stage Bdy
	Stormwater Grate		Concrete
	Drainage Swug		Tree
	Stormwater Gully		Retaining Wall
	Water Line		Design Finished Surface Contour
	Electrical Line UG		Design Fill Depth Contour
	Electrical Line AG		
	Power Pole		
	Telecom Line		
	Telecom Pit		

Stage 1
72 Acacia Road,
Karawatha

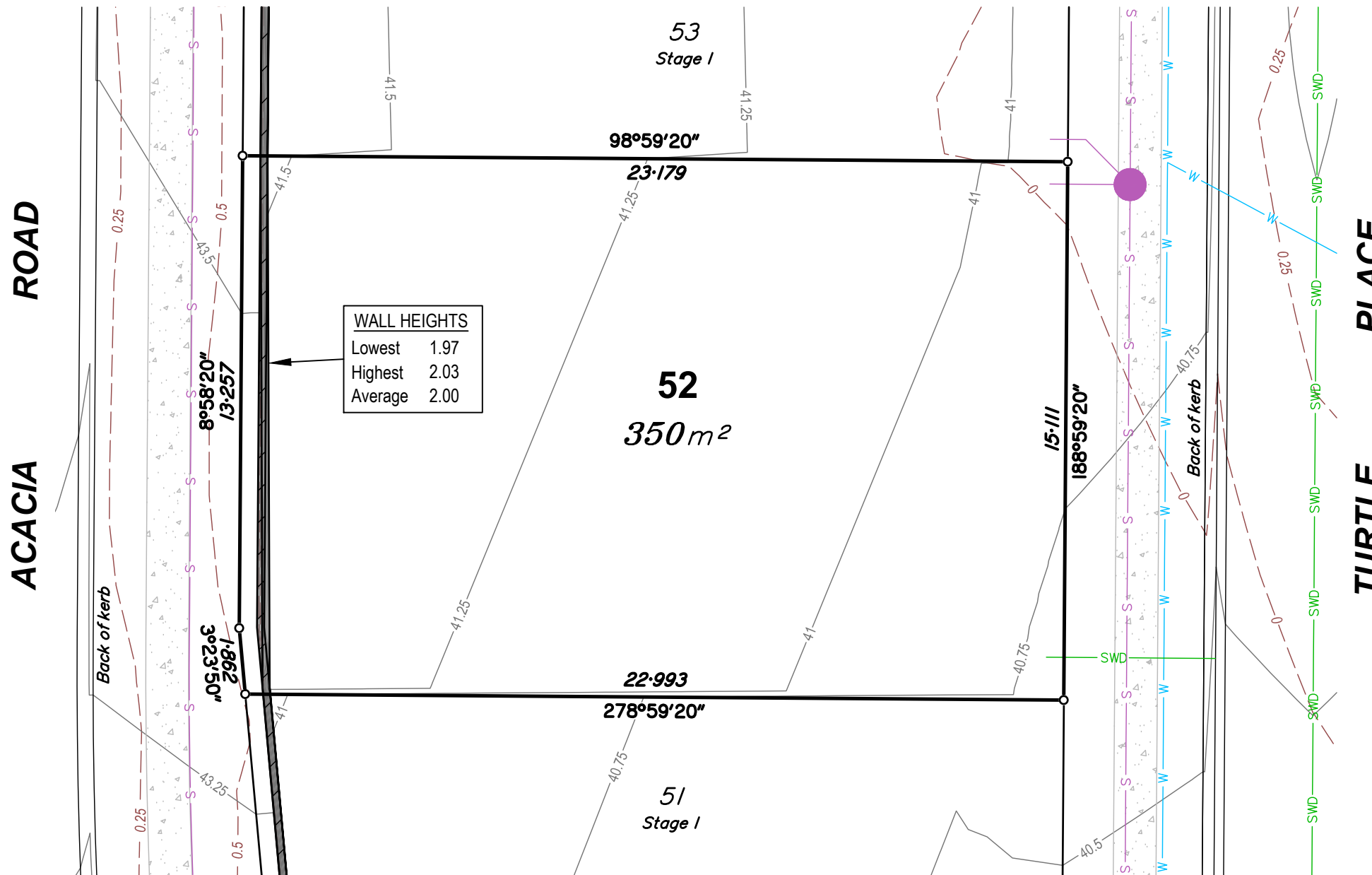
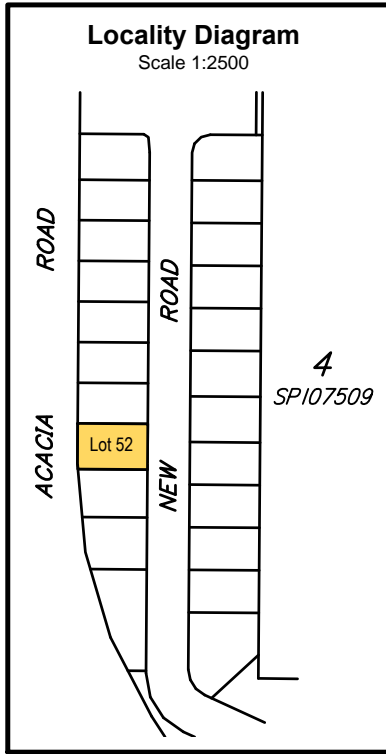
DISCLOSURE PLAN
LOT 51 ON SP280048

CLIENT
Solido Investments Nominees 1918 Pty Ltd

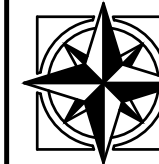
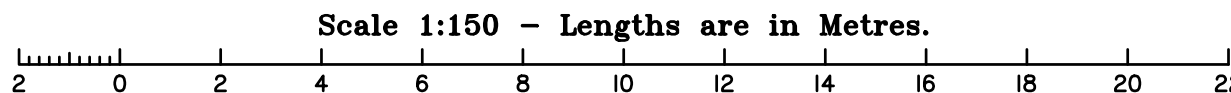
Issue	Description	Date	Appd.
E	Staging Revised	28/08/19	PR
F	Lots & Services updated	23/03/20	PR
G	Lot 74 updated	24/09/20	PR
H	Lot dimensions to MGA	27/7/21	PR

DRAWING NUMBER
4639-51

SCALE
1:200 (A3)



Compaction of the fill will be done in accordance with Australian Standard AS 3798-2007, and the level of Inspection during earthworks specified is Level 1 in accordance with AS1289 testing of soils for engineering purposes and AS 3798 guidelines for earthworks for commercial and residential developments.



East Coast Surveys (Aust)
P.O. BOX 168 Capalaba QLD 4157
Ph (07) 3823 1029 Fax (07) 3823 2691
Email info@eastcoastsurveys.com.au

Local Authority: Brisbane City Council
Authority Ref. No: A004060334
RP Description: Lot 1 on RP54123

Parish: Yeerongpilly
County: Stanley
Level Datum: AHD(der)
Origin:
Horizontal Datum: RP54123
Contour Interval: 0.25m

Allotment Details:
This plan shows details of proposed allotment 52 on Plan of Development XXXXXX in accordance with the Subdivision Application approved by Brisbane City Council on XX XXXXXXXXXX, XXXX subject to conditions.

Notes:
All dimensions and areas are subject to final registration of the survey plan.
The services, design contours and fill hatching shown hereon are from design drawings still to be approved by council.

Legend:

	Sewer Manhole		Building Envelope
	Sewer Main		Fence
	Stormwater MH		Stage Bdy
	Stormwater Grate		Concrete
	Drainage Swug		Tree
	Stormwater Gully		Retaining Wall
	Water Line		Design Finished Surface Contour
	Electrical Line UG		Design Fill Depth Contour
	Electrical Line AG		
	Power Pole		
	Telecom Line		
	Telecom Pit		

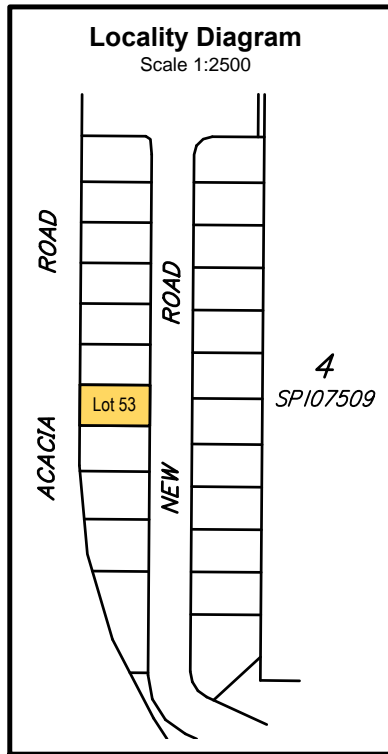
Stage 1
72 Acacia Road,
Karawatha

DISCLOSURE PLAN
LOT 52 ON SP280048

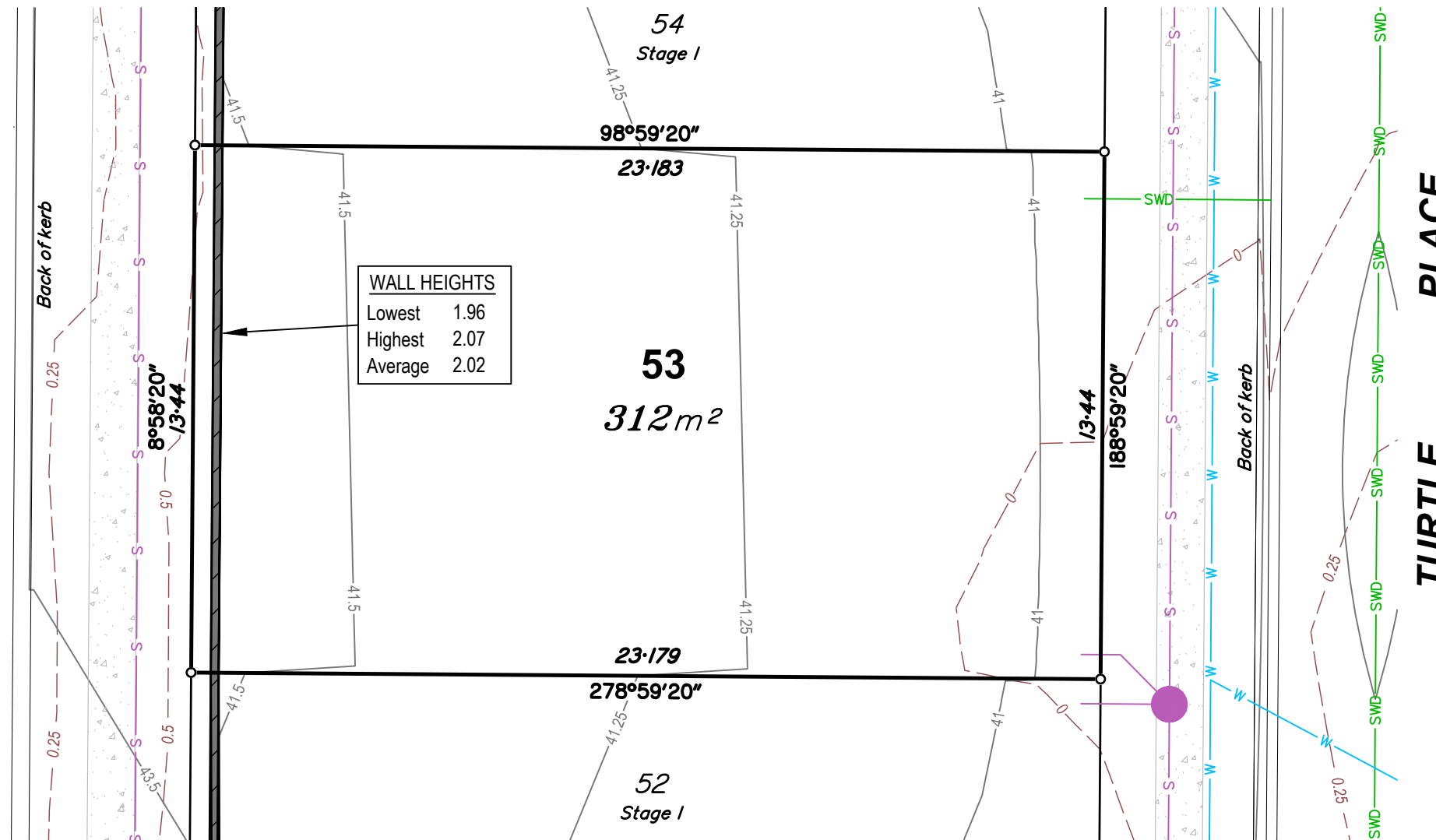
CLIENT
Solido Investments Nominees 1918 Pty Ltd

Issue	Description	Date	Appd.
E	Staging Revised	28/08/19	PR
F	Lots & Services updated	23/03/20	PR
G	Lot 74 updated	24/09/20	PR
H	Lot dimensions to MGA	27/7/21	PR

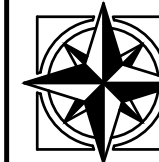
DRAWING NUMBER	SCALE
4639-52	1:200 (A3)



ACACIA ROAD



WALL HEIGHTS	
Lowest	1.96
Highest	2.07
Average	2.02



East Coast Surveys (Aust)
Pty. Ltd. ACN 111 434 025

P.O. BOX 168 Capalaba QLD 4157
Ph (07) 3823 1029 Fax (07) 3823 2691
Email info@eastcoastsurveys.com.au

Local Authority: Brisbane City Council
Authority Ref. No: A004060334
RP Description: Lot 1 on RP54123

Parish: Yeerongpilly
County: Stanley
Level Datum: AHD(der)
Origin:
Horizontal Datum: RP54123
Contour Interval: 0.25m

Allotment Details:

This plan shows details of proposed allotment 53 on Plan of Development XXXXXX in accordance with the Subdivision Application approved by Brisbane City Council on XX XXXXXXXXXX, XXXX subject to conditions.

Notes:

All dimensions and areas are subject to final registration of the survey plan.

The services, design contours and fill hatching shown hereon are from design drawings still to be approved by council.

Legend:

	Sewer Manhole		Building Envelope
	Sewer Main		Fence
	Stormwater MH		Stage Bdy
	Stormwater Grate		Concrete
	Drainage Swug		Tree
	Stormwater Gully		Retaining Wall
	Water Line		Design Finished Surface Contour
	Electrical Line UG		Design Fill Depth Contour
	Electrical Line AG		
	Power Pole		
	Telecom Line		
	Telecom Pit		

Stage 1
72 Acacia Road,
Karawatha

DISCLOSURE PLAN

LOT 53 ON SP280048

CLIENT

Solido Investments Nominees 1918 Pty Ltd

Issue	Description	Date	Appd.
E	Staging Revised	28/08/19	PR
F	Lots & Services updated	23/03/20	PR
G	Lot 74 updated	24/09/20	PR
H	Lot dimensions to MGA	27/7/21	PR

DRAWING NUMBER

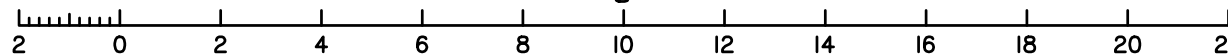
4639-53

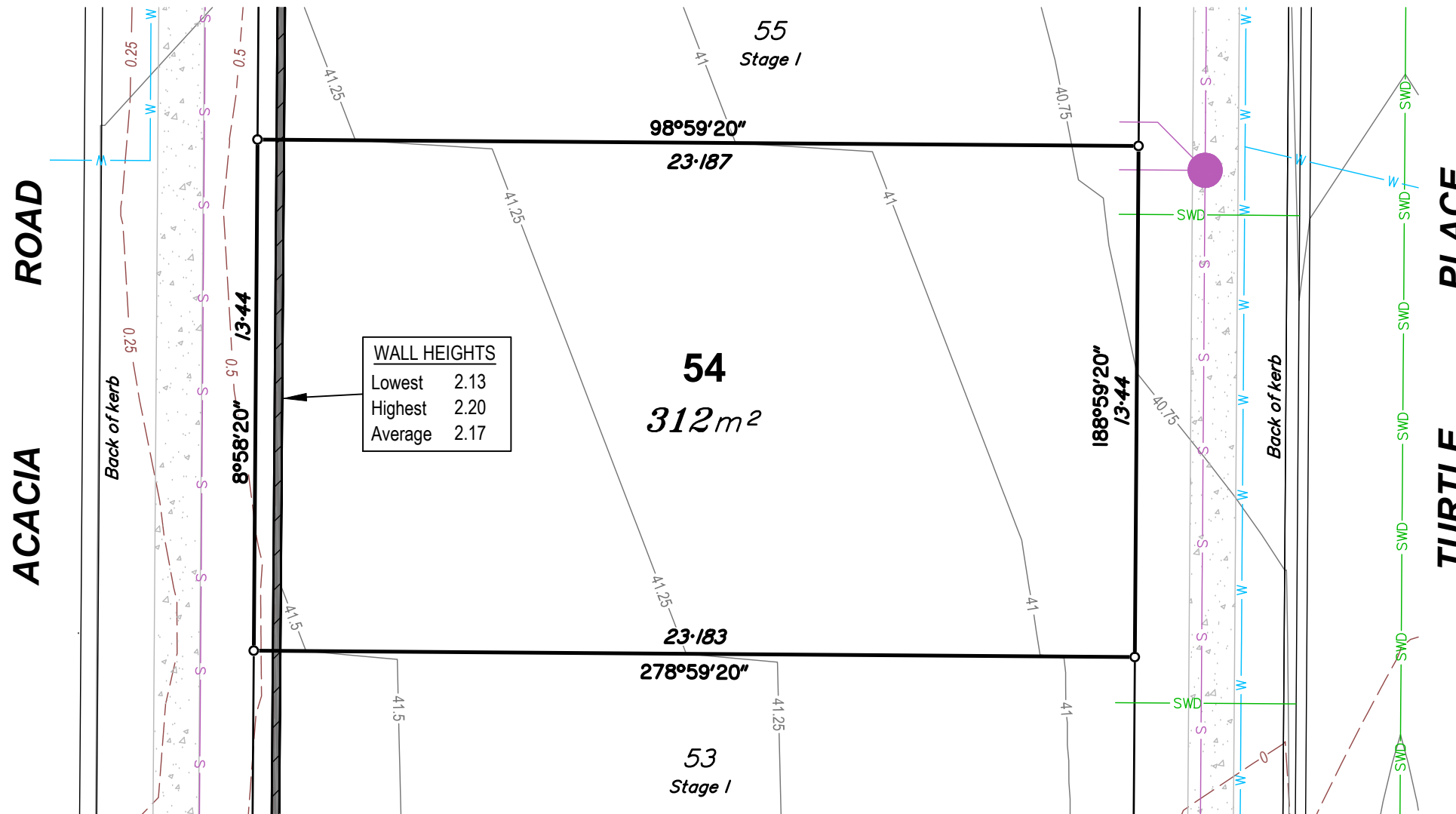
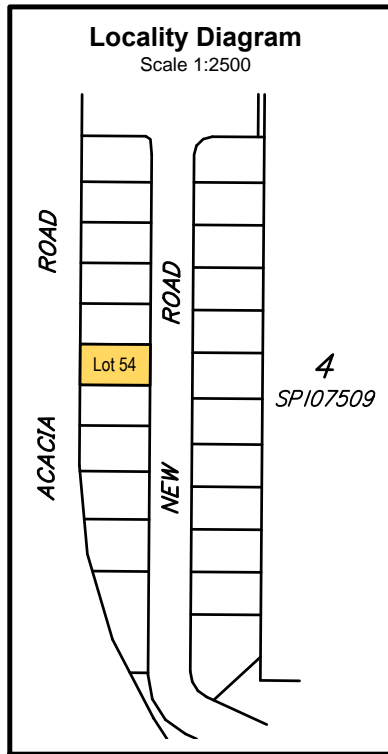
SCALE

1:200 (A3)

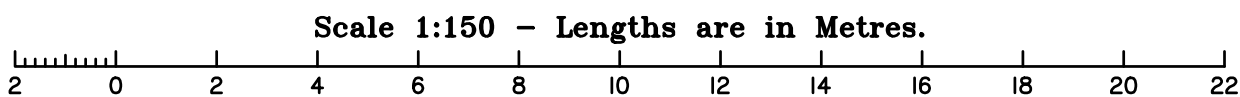
Compaction of the fill will be done in accordance with Australian Standard AS 3798-2007, and the level of Inspection during earthworks specified is Level 1 in accordance with AS1289 testing of soils for engineering purposes and AS 3798 guidelines for earthworks for commercial and residential developments.

Scale 1:150 - Lengths are in Metres.

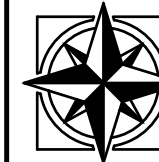




WALL HEIGHTS	
Lowest	2.13
Highest	2.20
Average	2.17



Compaction of the fill will be done in accordance with Australian Standard AS 3798-2007, and the level of Inspection during earthworks specified is Level 1 in accordance with AS1289 testing of soils for engineering purposes and AS 3798 guidelines for earthworks for commercial and residential developments.



East Coast Surveys (Aust)
P.O. BOX 168 Capalaba QLD 4157
Ph (07) 3823 1029 Fax (07) 3823 2691
Email info@eastcoastsurveys.com.au

Local Authority: Brisbane City Council
Authority Ref. No: A004060334
RP Description: Lot 1 on RP54123

Parish: Yeerongpilly
County: Stanley
Level Datum: AHD(der)
Origin:
Horizontal Datum: RP54123
Contour Interval: 0.25m

Allotment Details:
This plan shows details of proposed allotment 54 on Plan of Development XXXXXX in accordance with the Subdivision Application approved by Brisbane City Council on XX XXXXXXXXX, XXXX subject to conditions.

Notes:
All dimensions and areas are subject to final registration of the survey plan.
The services, design contours and fill hatching shown hereon are from design drawings still to be approved by council.

Legend:

	Sewer Manhole		Building Envelope
	Sewer Main		Fence
	Stormwater MH		Stage Bdy
	Stormwater Grate		Concrete
	Drainage Swug		Tree
	Stormwater Gully		Retaining Wall
	Water Line		Design Finished Surface Contour
	Electrical Line UG		Design Fill Depth Contour
	Electrical Line AG		
	Power Pole		
	Telecom Line		
	Telecom Pit		

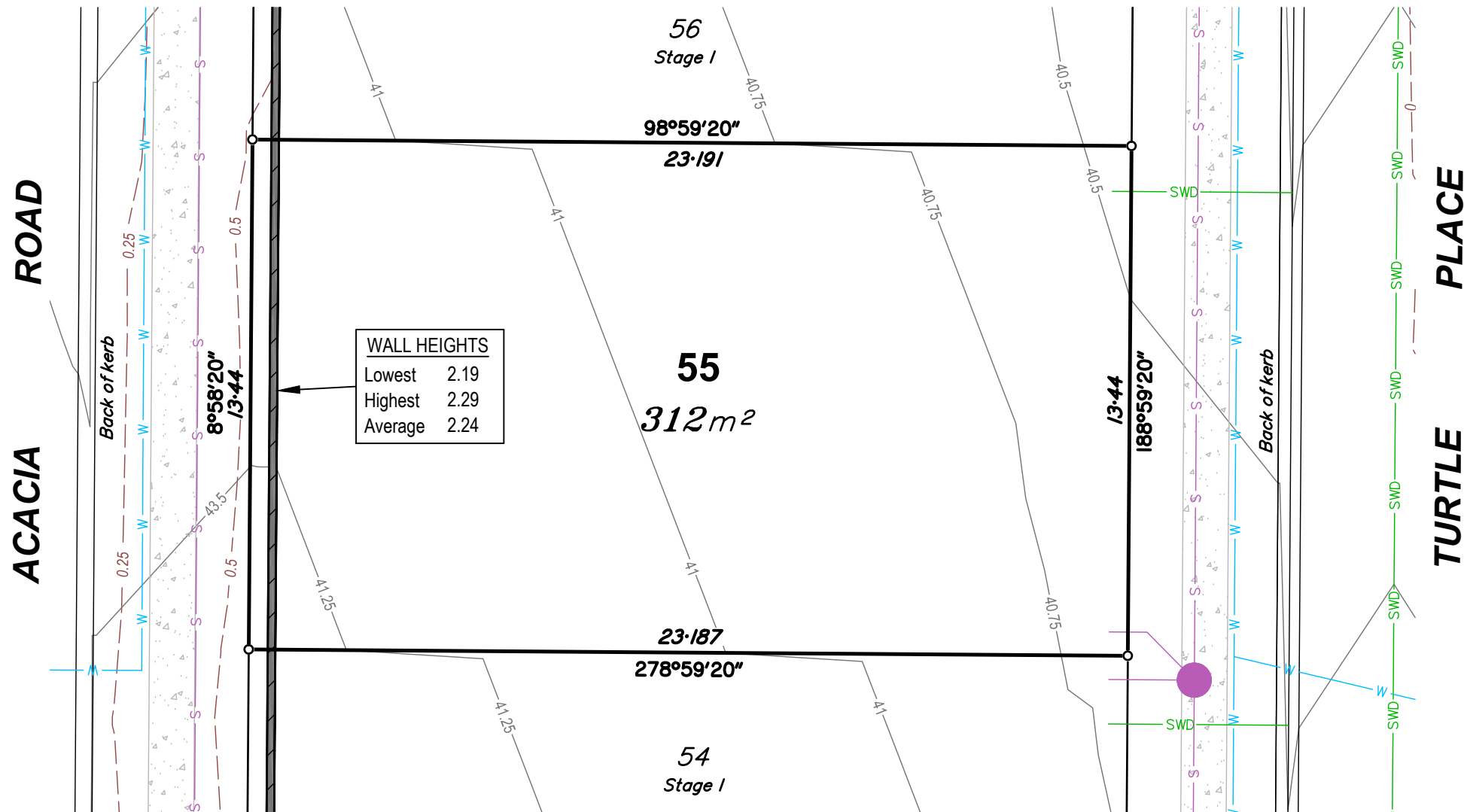
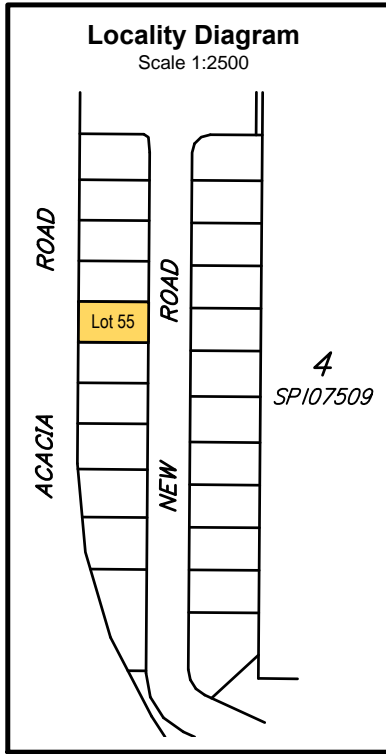
Stage 1
72 Acacia Road,
Karawatha

DISCLOSURE PLAN
LOT 54 ON SP280048

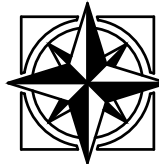
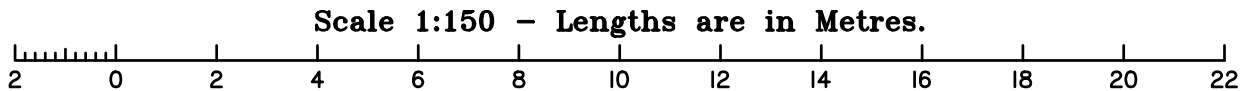
CLIENT
Solido Investments Nominees 1918 Pty Ltd

Issue	Description	Date	Appd.
E	Staging Revised	28/08/19	PR
F	Lots & Services updated	23/03/20	PR
G	Lot 74 updated	24/09/20	PR
H	Lot dimensions to MGA	27/7/21	PR

DRAWING NUMBER	SCALE
4639-54	1:200 (A3)



Compaction of the fill will be done in accordance with Australian Standard AS 3798-2007, and the level of Inspection during earthworks specified is Level 1 in accordance with AS1289 testing of soils for engineering purposes and AS 3798 guidelines for earthworks for commercial and residential developments.



East Coast Surveys (Aust)
P.O. BOX 168 Capalaba QLD 4157
Ph (07) 3823 1029 Fax (07) 3823 2691
Email info@eastcoastsurveys.com.au

Local Authority: Brisbane City Council
Authority Ref. No: A004060334
RP Description: Lot 1 on RP54123

Parish: Yeerongpilly
County: Stanley
Level Datum: AHD(der)
Origin:
Horizontal Datum: RP54123
Contour Interval: 0.25m

Allotment Details:
This plan shows details of proposed allotment 55 on Plan of Development XXXXXX in accordance with the Subdivision Application approved by Brisbane City Council on XX XXXXXXXXX, XXXX subject to conditions.

Notes:
All dimensions and areas are subject to final registration of the survey plan.
The services, design contours and fill hatching shown hereon are from design drawings still to be approved by council.

Legend:

	Sewer Manhole		Building Envelope
	Sewer Main		Fence
	Stormwater MH		Stage Bdy
	Stormwater Grate		Concrete
	Drainage Swug		Tree
	Stormwater Gully		Retaining Wall
	Water Line		Design Finished Surface Contour
	Electrical Line UG		Design Fill Depth Contour
	Electrical Line AG		
	Power Pole		
	Telecom Line		
	Telecom Pit		

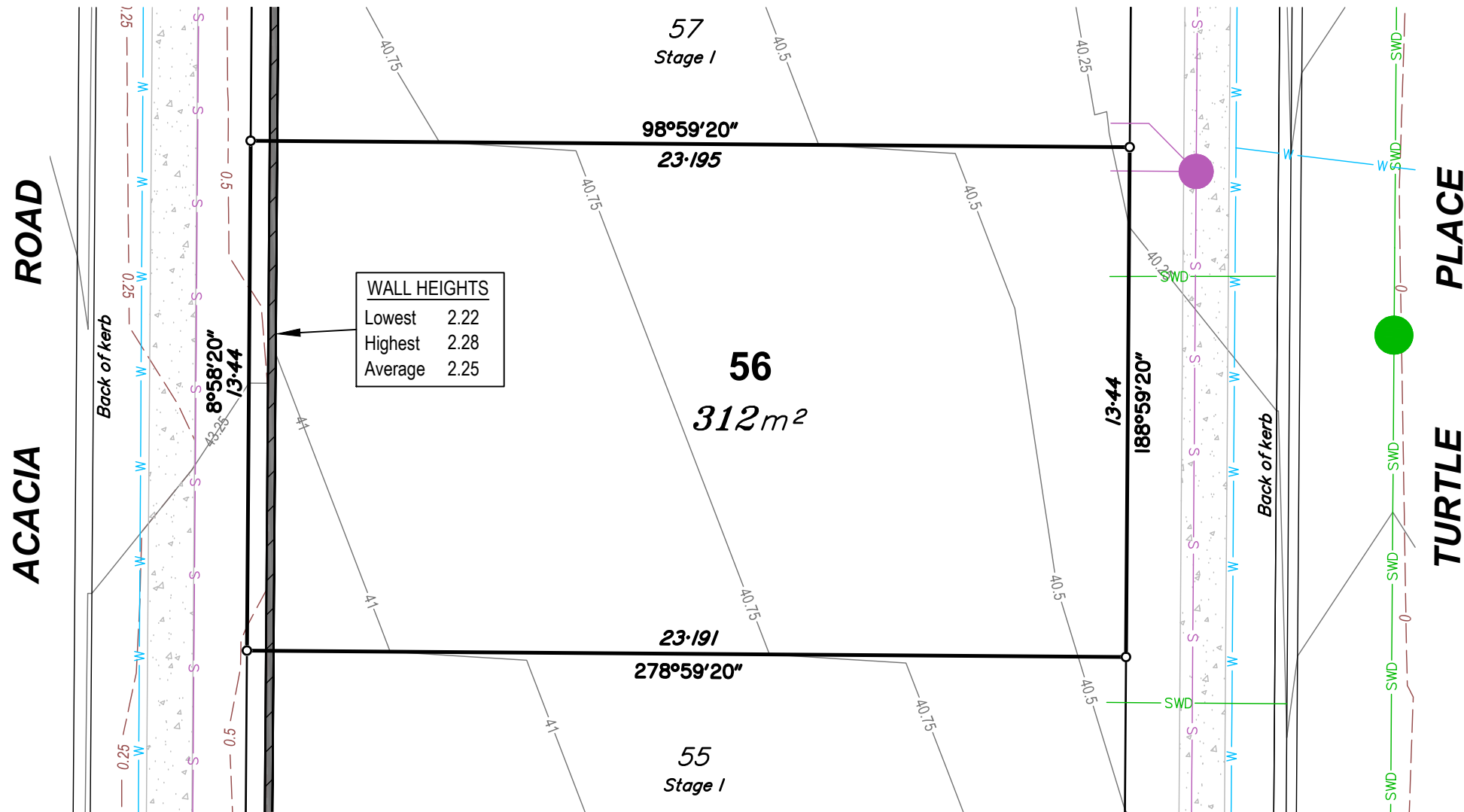
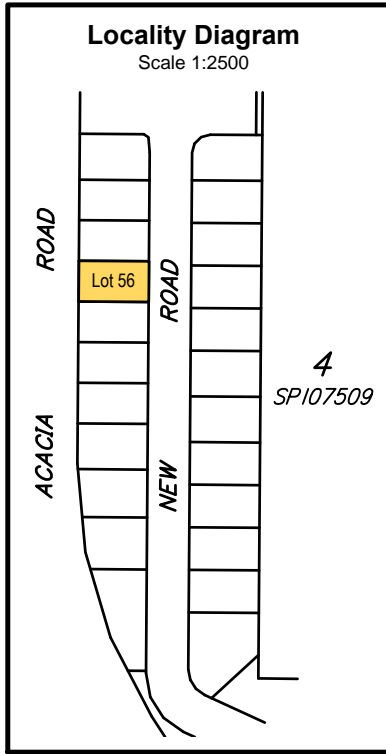
Stage 1
72 Acacia Road,
Karawatha

DISCLOSURE PLAN
LOT 55 ON SP280048

CLIENT
Solido Investments Nominees 1918 Pty Ltd

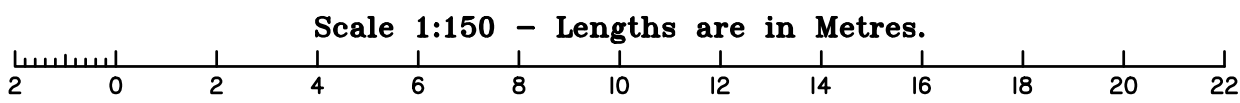
Issue	Description	Date	Appd.
E	Staging Revised	28/08/19	PR
F	Lots & Services updated	23/03/20	PR
G	Lot 74 updated	24/09/20	PR
H	Lot dimensions to MGA	27/7/21	PR

DRAWING NUMBER	SCALE
4639-55	1:200 (A3)



WALL HEIGHTS
 Lowest 2.22
 Highest 2.28
 Average 2.25

Compaction of the fill will be done in accordance with Australian Standard AS 3798-2007, and the level of Inspection during earthworks specified is Level 1 in accordance with AS1289 testing of soils for engineering purposes and AS 3798 guidelines for earthworks for commercial and residential developments.



East Coast Surveys (Aust)
 Pty. Ltd. ACN 111 434 025
 P.O. BOX 168 Capalaba QLD 4157
 Ph (07) 3823 1029 Fax (07) 3823 2691
 Email info@eastcoastsurveys.com.au

Local Authority: Brisbane City Council
 Authority Ref. No: A004060334
 RP Description: Lot 1 on RP54123

Parish: Yeerongpilly
 County: Stanley
 Level Datum: AHD(der)
 Origin:
 Horizontal Datum: RP54123
 Contour Interval: 0.25m

Allotment Details:
 This plan shows details of proposed allotment 56 on Plan of Development XXXXXX in accordance with the Subdivision Application approved by Brisbane City Council on XX XXXXXXXXXX, XXXX subject to conditions.

Notes:
 All dimensions and areas are subject to final registration of the survey plan.
 The services, design contours and fill hatching shown hereon are from design drawings still to be approved by council.

Legend:

	Sewer Manhole		Building Envelope
	Sewer Main		Fence
	Stormwater MH		Stage Bdy
	Stormwater Grate		Concrete
	Drainage Swug		Tree
	Stormwater Gully		Retaining Wall
	Water Line		Design Finished Surface Contour
	Electrical Line UG		Design Fill Depth Contour
	Electrical Line AG		
	Power Pole		
	Telecom Line		
	Telecom Pit		

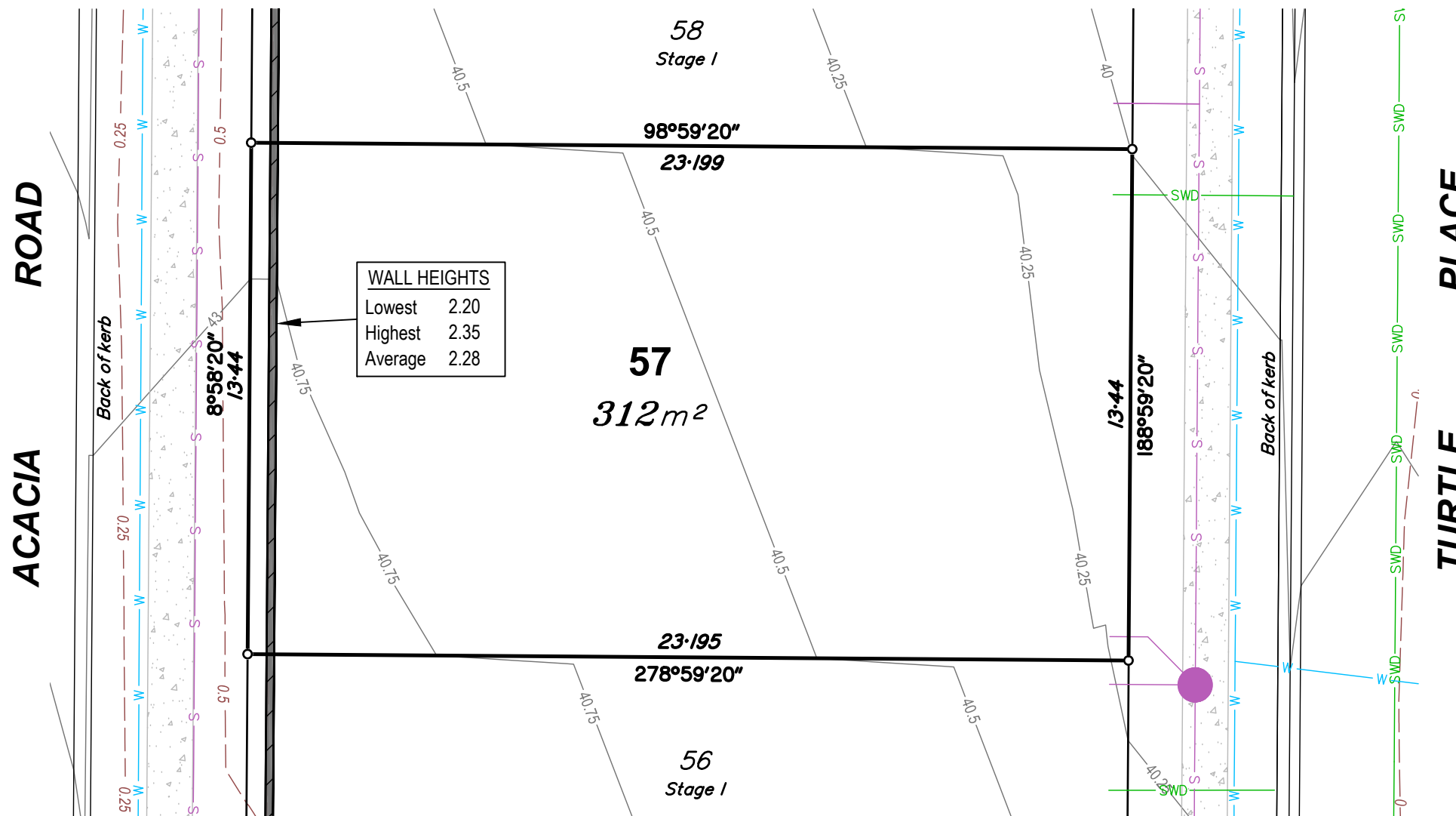
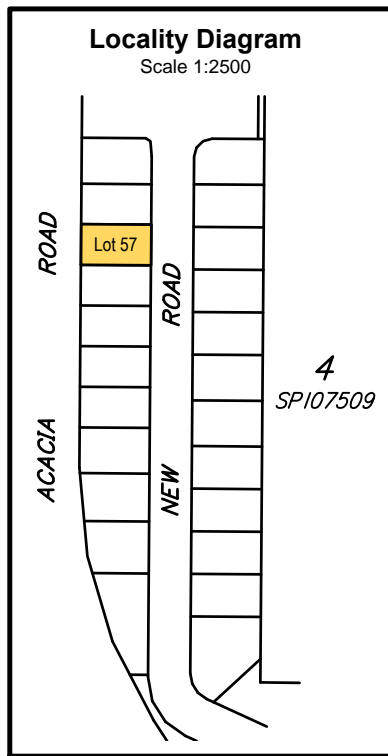
Stage 1
72 Acacia Road,
Karawatha

DISCLOSURE PLAN
 LOT 56 ON SP280048

CLIENT
 Solido Investments Nominees 1918 Pty Ltd

Issue	Description	Date	Appd.
E	Staging Revised	28/08/19	PR
F	Lots & Services updated	23/03/20	PR
G	Lot 74 updated	24/09/20	PR
H	Lot dimensions to MGA	27/7/21	PR

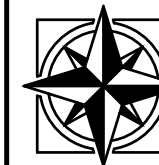
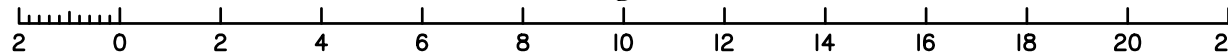
DRAWING NUMBER: 4639-56
 SCALE: 1:200 (A3)



WALL HEIGHTS
Lowest 2.20
Highest 2.35
Average 2.28

Compaction of the fill will be done in accordance with Australian Standard AS 3798-2007, and the level of Inspection during earthworks specified is Level 1 in accordance with AS1289 testing of soils for engineering purposes and AS 3798 guidelines for earthworks for commercial and residential developments.

Scale 1:150 - Lengths are in Metres.



East Coast Surveys (Aust)
Pty. Ltd. ACN 111 434 025

P.O. BOX 168 Capalaba QLD 4157
Ph (07) 3823 1029 Fax (07) 3823 2691
Email info@eastcoastsurveys.com.au

Local Authority: Brisbane City Council
Authority Ref. No: A004060334
RP Description: Lot 1 on RP54123

Parish: Yeerongpilly
County: Stanley
Level Datum: AHD(der)
Origin:
Horizontal Datum: RP54123
Contour Interval: 0.25m

Allotment Details:

This plan shows details of proposed allotment 57 on Plan of Development XXXXXX in accordance with the Subdivision Application approved by Brisbane City Council on XX XXXXXXXXX, XXXX subject to conditions.

Notes:

All dimensions and areas are subject to final registration of the survey plan.

The services, design contours and fill hatching shown hereon are from design drawings still to be approved by council.

Legend:

- Sewer Manhole
- Sewer Main
- Stormwater MH
- Stormwater Grate
- Drainage Swug
- Stormwater Gully
- Water Line
- Electrical Line UG
- Electrical Line AG
- Power Pole
- Telecom Line
- Telecom Pit
- Building Envelope
- Fence
- Stage Bdy
- Concrete
- Tree
- Retaining Wall
- Design Finished Surface Contour
- Design Fill Depth Contour

Stage 1
72 Acacia Road,
Karawatha

DISCLOSURE PLAN

LOT 57 ON SP280048

CLIENT

Solido Investments Nominees 1918 Pty Ltd

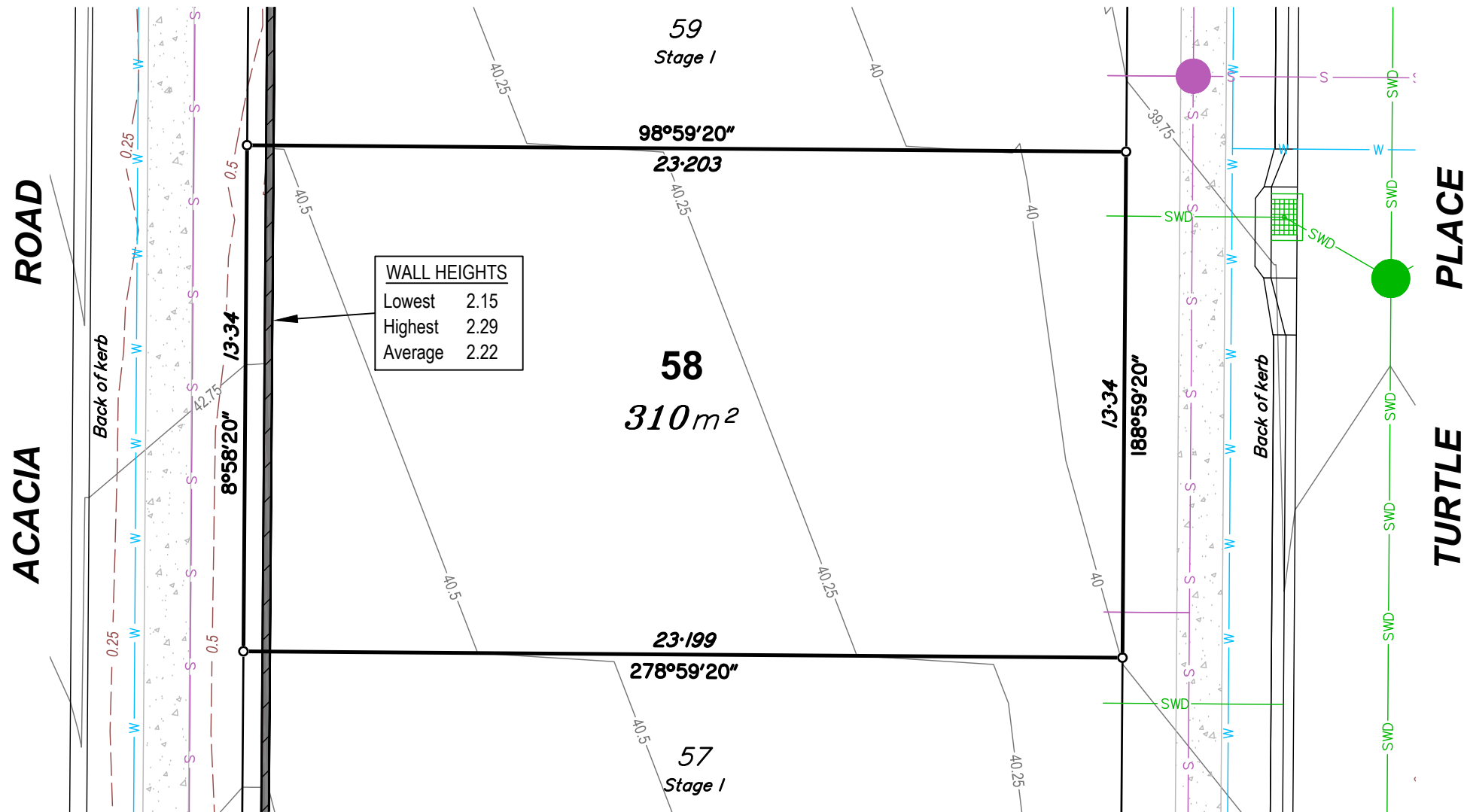
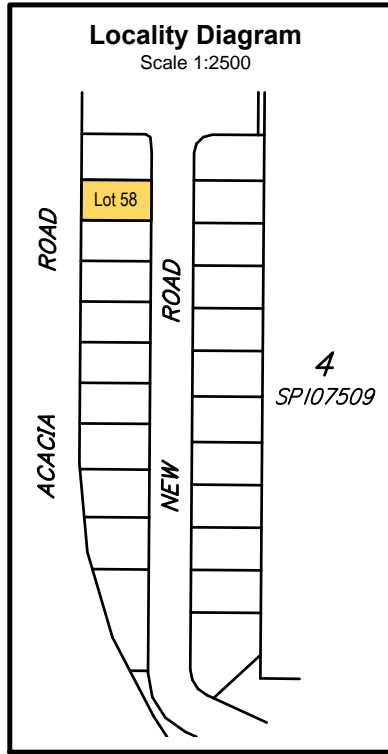
Issue	Description	Date	Appd.
E	Staging Revised	28/08/19	PR
F	Lots & Services updated	23/03/20	PR
G	Lot 74 updated	24/09/20	PR
H	Lot dimensions to MGA	27/7/21	PR

DRAWING NUMBER

4639-57

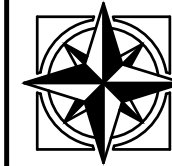
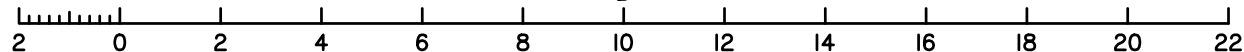
SCALE

1:200 (A3)



Compaction of the fill will be done in accordance with Australian Standard AS 3798-2007, and the level of Inspection during earthworks specified is Level 1 in accordance with AS1289 testing of soils for engineering purposes and AS 3798 guidelines for earthworks for commercial and residential developments.

Scale 1:150 - Lengths are in Metres.



East Coast Surveys (Aust)
Pty. Ltd. ACN 111 434 005

P.O. BOX 168 Capalaba QLD 4157
Ph (07) 3823 1029 Fax (07) 3823 2691
Email info@eastcoastsurveys.com.au

Local Authority: Brisbane City Council
Authority Ref. No: A004060334
RP Description: Lot 1 on RP54123

Parish: Yeerongpilly
County: Stanley
Level Datum: AHD(der)
Origin:
Horizontal Datum: RP54123
Contour Interval: 0.25m

Allotment Details:

This plan shows details of proposed allotment 58 on Plan of Development XXXXXX in accordance with the Subdivision Application approved by Brisbane City Council on XX XXXXXXXXXX, XXXX subject to conditions.

Notes:

All dimensions and areas are subject to final registration of the survey plan.

The services, design contours and fill hatching shown hereon are from design drawings still to be approved by council.

Legend:

- Sewer Manhole
- Sewer Main
- Stormwater MH
- Stormwater Grate
- Drainage Swug
- Stormwater Gully
- Water Line
- Electrical Line UG
- Electrical Line AG
- Telecom Line
- Telecom Pit
- Building Envelope
- Fence
- Stage Bdy
- Concrete
- Tree
- Retaining Wall
- Design Finished Surface Contour
- Design Fill Depth Contour

Stage 1
72 Acacia Road,
Karawatha

DISCLOSURE PLAN

LOT 58 ON SP280048

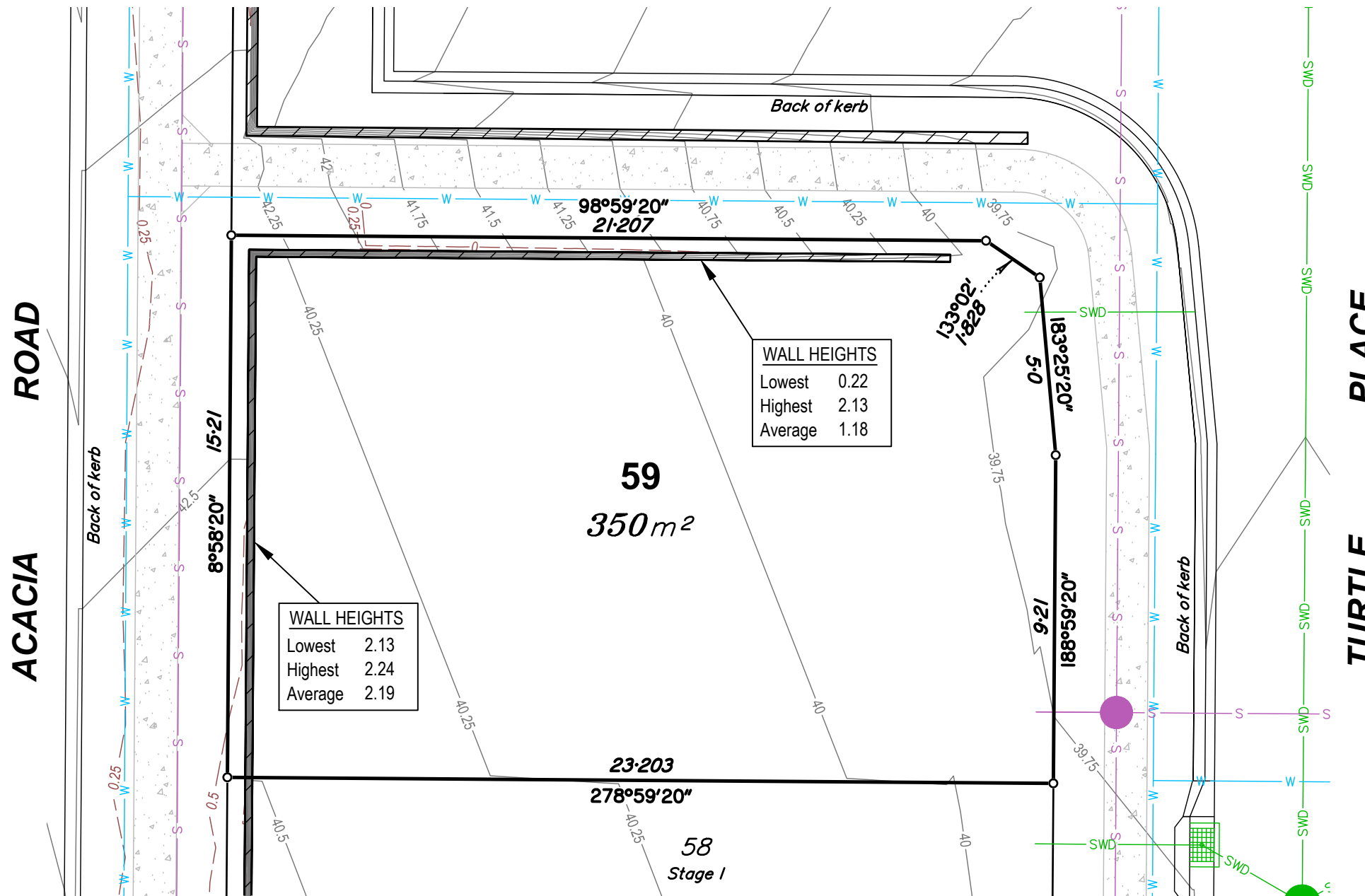
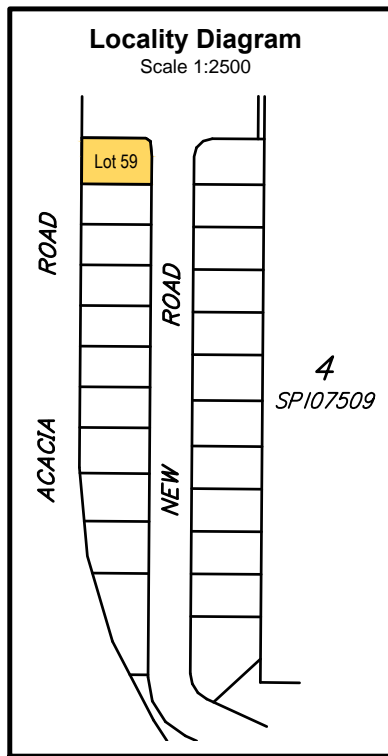
CLIENT

Solido Investments Nominees 1918 Pty Ltd

Issue	Description	Date	Appd.
E	Staging Revised	28/08/19	PR
F	Lots & Services updated	23/03/20	PR
G	Lot 74 updated	24/09/20	PR
H	Lot dimensions to MGA	27/7/21	PR

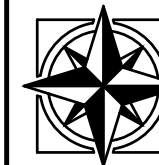
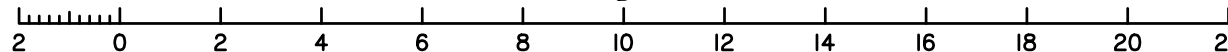
DRAWING NUMBER
4639-58

SCALE
1:200 (A3)



Compaction of the fill will be done in accordance with Australian Standard AS 3798-2007, and the level of Inspection during earthworks specified is Level 1 in accordance with AS1289 testing of soils for engineering purposes and AS 3798 guidelines for earthworks for commercial and residential developments.

Scale 1:150 – Lengths are in Metres.



East Coast Surveys (Aust)
P.O. BOX 168 Capalaba QLD 4157
Ph (07) 3823 1029 Fax (07) 3823 2691
Email info@eastcoastsurveys.com.au

Local Authority: Brisbane City Council
Authority Ref. No: A004060334
RP Description: Lot 1 on RP54123

Parish: Yeerongpilly
County: Stanley
Level Datum: AHD(der)
Origin:
Horizontal Datum: RP54123
Contour Interval: 0.25m

Allotment Details:
This plan shows details of proposed allotment 59 on Plan of Development XXXXXX in accordance with the Subdivision Application approved by Brisbane City Council on XX XXXXXXXXX, XXXX subject to conditions.

Notes:
All dimensions and areas are subject to final registration of the survey plan.
The services, design contours and fill hatching shown hereon are from design drawings still to be approved by council.

Legend:

	Sewer Manhole		Building Envelope
	Sewer Main		Fence
	Stormwater MH		Stage Bdy
	Stormwater Grate		Concrete
	Drainage Swug		Tree
	Stormwater Gully		Retaining Wall
	Water Line		Design Finished Surface Contour
	Electrical Line UG		Design Fill Depth Contour
	Electrical Line AG		
	Power Pole		
	Telecom Line		
	Telecom Pit		

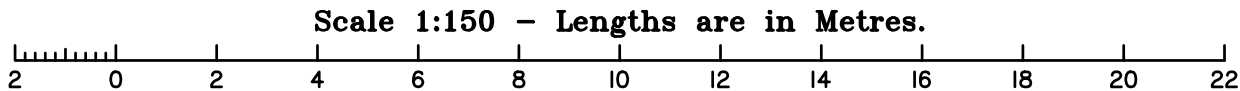
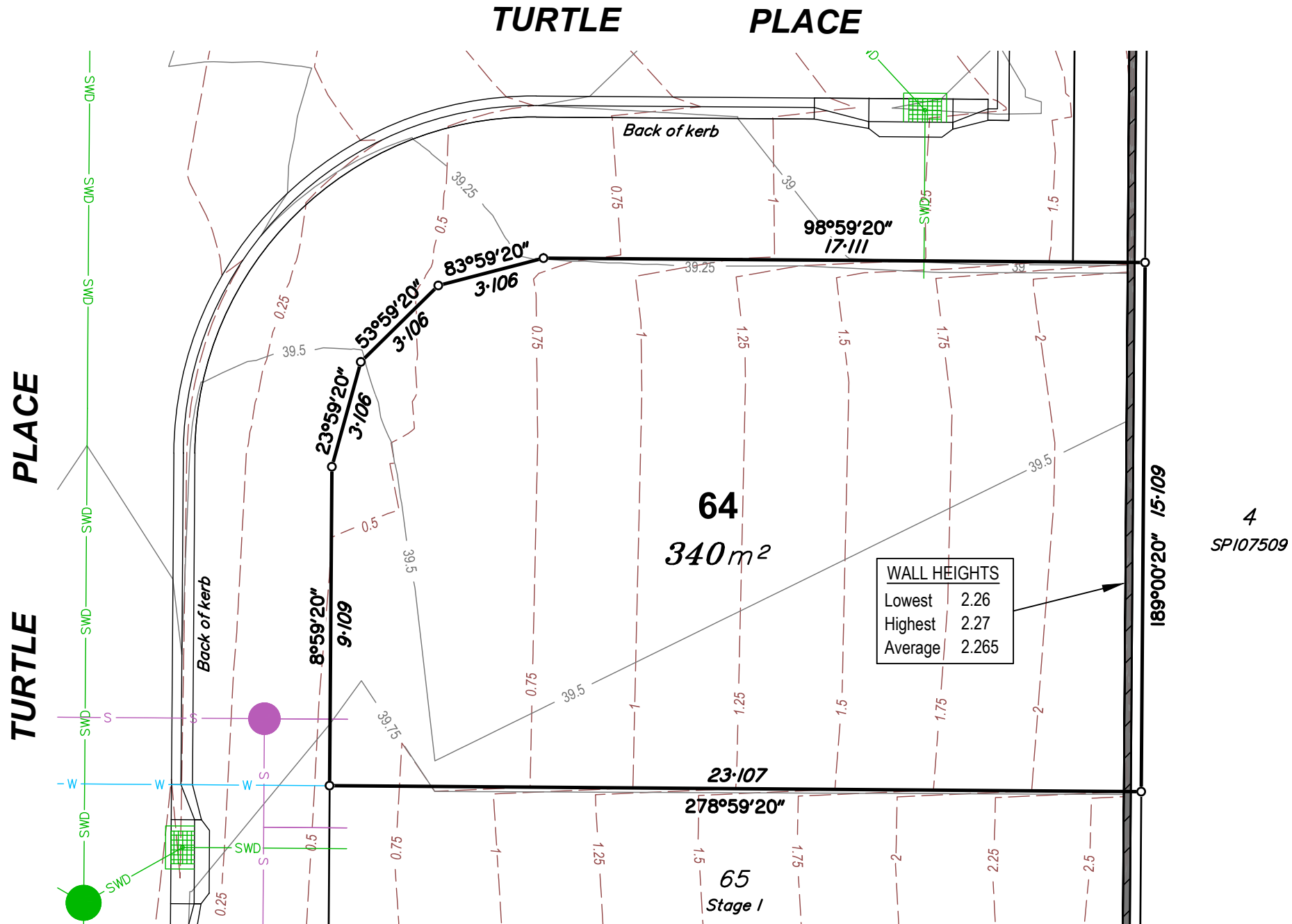
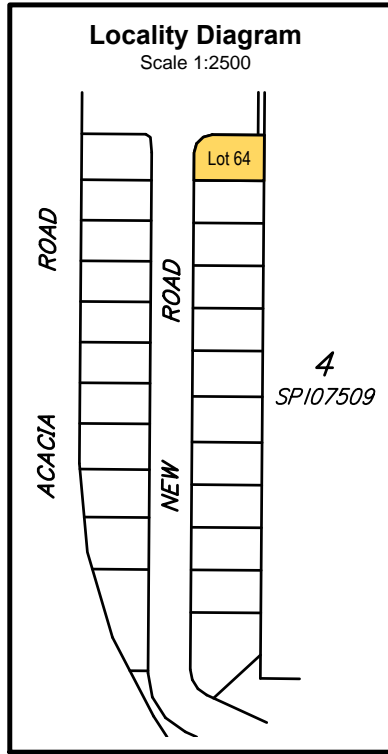
Stage 1
72 Acacia Road,
Karawatha

DISCLOSURE PLAN
LOT 59 ON SP280048

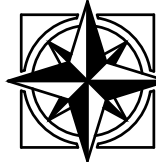
CLIENT
Solido Investments Nominees 1918 Pty Ltd

Issue	Description	Date	Appd.
E	Staging Revised	28/08/19	PR
F	Lots & Services updated	23/03/20	PR
G	Lot 74 updated	24/09/20	PR
H	Lot dimensions to MGA	27/7/21	PR

DRAWING NUMBER	SCALE
4639-59	1:200 (A3)



Compaction of the fill will be done in accordance with Australian Standard AS 3798-2007, and the level of Inspection during earthworks specified is Level 1 in accordance with AS1289 testing of soils for engineering purposes and AS 3798 guidelines for earthworks for commercial and residential developments.



East Coast Surveys (Aust)
P.O. BOX 168 Capalaba QLD 4157
Ph (07) 3823 1029 Fax (07) 3823 2691
Email info@eastcoastsurveys.com.au

Local Authority: Brisbane City Council
Authority Ref. No: A004060334
RP Description: Lot 1 on RP54123

Parish: Yeerongpilly
County: Stanley
Level Datum: AHD(der)
Origin:
Horizontal Datum: RP54123
Contour Interval: 0.25m

Allotment Details:
This plan shows details of proposed allotment 64 on Plan of Development XXXXXX in accordance with the Subdivision Application approved by Brisbane City Council on XX XXXXXXXXXX, XXXX subject to conditions.

Notes:
All dimensions and areas are subject to final registration of the survey plan.
The services, design contours and fill hatching shown hereon are from design drawings still to be approved by council.

Legend:

	Sewer Manhole		Building Envelope
	Sewer Main		Fence
	Stormwater MH		Stage Bdy
	Stormwater Grate		Concrete
	Drainage Swug		Tree
	Stormwater Gully		Retaining Wall
	Water Line		Design Finished Surface Contour
	Electrical Line UG		Design Fill Depth Contour
	Electrical Line AG		
	Power Pole		
	Telecom Line		
	Telecom Pit		

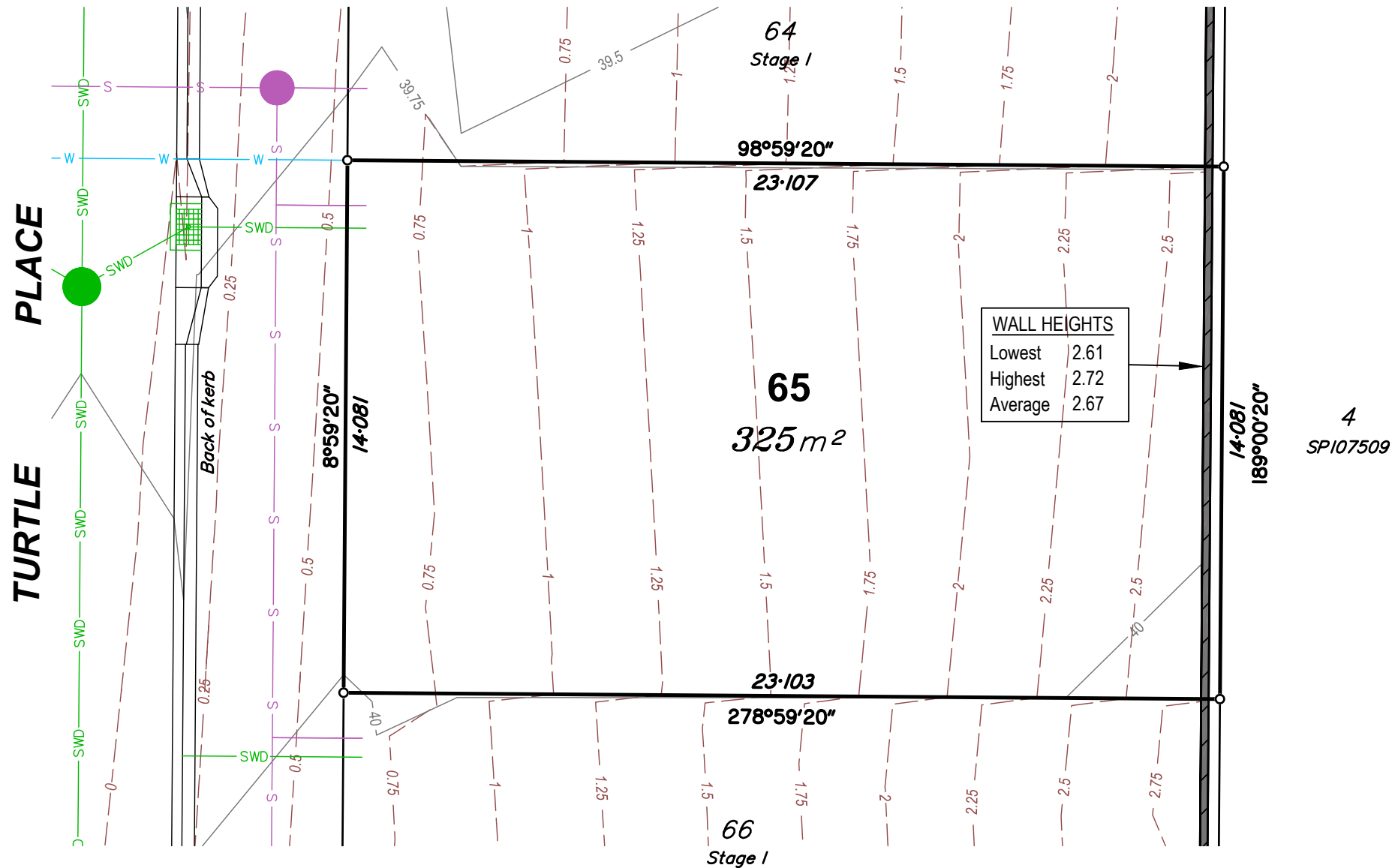
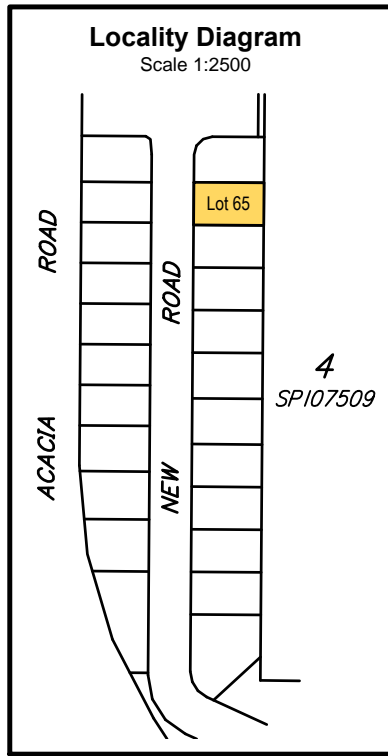
Stage 1
72 Acacia Road,
Karawatha

DISCLOSURE PLAN
LOT 64 ON SP280048

CLIENT
Solido Investments Nominees 1918 Pty Ltd

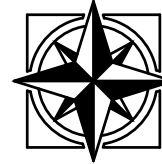
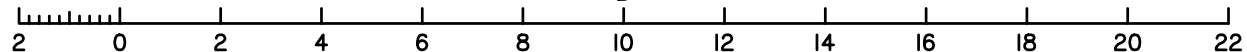
Issue	Description	Date	Appd.
E	Staging Revised	28/08/19	PR
F	Lots & Services updated	23/03/20	PR
G	Lot 74 updated	24/09/20	PR
H	Lot dimensions to MGA	27/7/21	PR

DRAWING NUMBER	SCALE
4639-64	1:200 (A3)



Compaction of the fill will be done in accordance with Australian Standard AS 3798-2007, and the level of Inspection during earthworks specified is Level 1 in accordance with AS1289 testing of soils for engineering purposes and AS 3798 guidelines for earthworks for commercial and residential developments.

Scale 1:150 - Lengths are in Metres.



East Coast Surveys (Aust)
Pty. Ltd. ACN 111 434 025

P.O. BOX 168 Capalaba QLD 4157
Ph (07) 3823 1029 Fax (07) 3823 2691
Email info@eastcoastsurveys.com.au

Local Authority: Brisbane City Council
Authority Ref. No: A004060334
RP Description: Lot 1 on RP54123

Parish: Yeerongpilly
County: Stanley
Level Datum: AHD(der)
Origin:
Horizontal Datum: RP54123
Contour Interval: 0.25m

Allotment Details:

This plan shows details of proposed allotment 65 on Plan of Development XXXXXX in accordance with the Subdivision Application approved by Brisbane City Council on XX XXXXXXXXX, XXXX subject to conditions.

Notes:

All dimensions and areas are subject to final registration of the survey plan.

The services, design contours and fill hatching shown hereon are from design drawings still to be approved by council.

Legend:

- Sewer Manhole
- Sewer Main
- Stormwater MH
- Stormwater Grate
- Drainage Swug
- Stormwater Gully
- Water Line
- Electrical Line UG
- Electrical Line AG
- Power Pole
- Telecom Line
- Telecom Pit
- Building Envelope
- Fence
- Stage Bdy
- Concrete
- Tree
- Retaining Wall
- Design Finished Surface Contour
- Design Fill Depth Contour

Stage 1
72 Acacia Road,
Karawatha

DISCLOSURE PLAN

LOT 65 ON SP280048

CLIENT

Solido Investments Nominees 1918 Pty Ltd

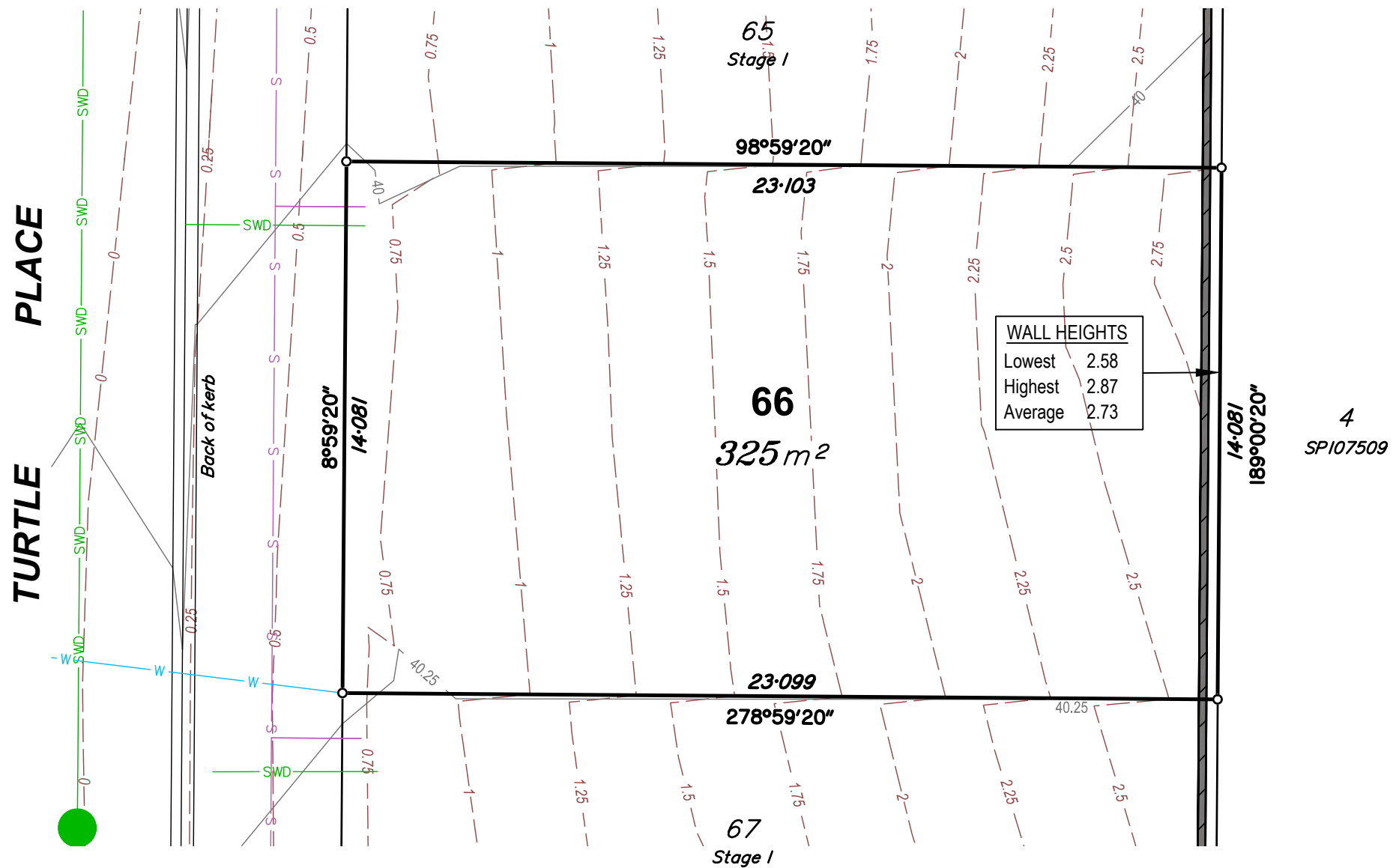
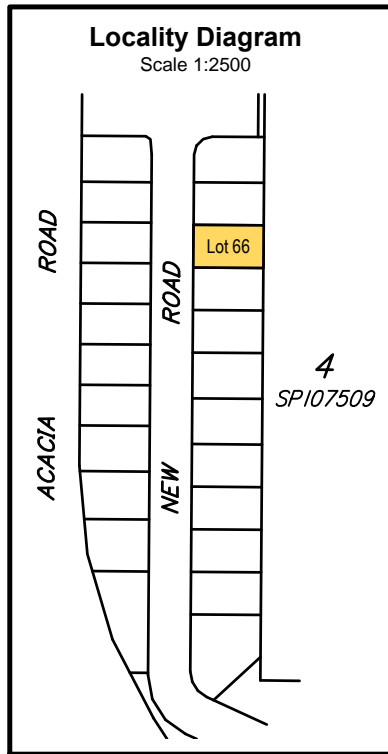
Issue	Description	Date	Appd.
E	Staging Revised	28/08/19	PR
F	Lots & Services updated	23/03/20	PR
G	Lot 74 updated	24/09/20	PR
H	Lot dimensions to MGA	27/7/21	PR

DRAWING NUMBER

4639-65

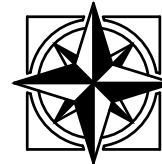
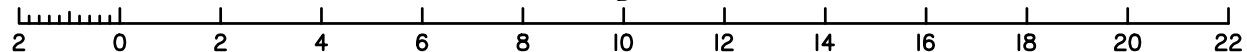
SCALE

1:200 (A3)



Compaction of the fill will be done in accordance with Australian Standard AS 3798-2007, and the level of Inspection during earthworks specified is Level 1 in accordance with AS1289 testing of soils for engineering purposes and AS 3798 guidelines for earthworks for commercial and residential developments.

Scale 1:150 - Lengths are in Metres.



East Coast Surveys (Aust)
P.O. BOX 168 Capalaba QLD 4157
Ph (07) 3823 1029 Fax (07) 3823 2691
Email info@eastcoastsurveys.com.au

Local Authority: Brisbane City Council
Authority Ref. No: A004060334
RP Description: Lot 1 on RP54123

Parish: Yeerongpilly
County: Stanley
Level Datum: AHD(der)
Origin:
Horizontal Datum: RP54123
Contour Interval: 0.25m

Allotment Details:

This plan shows details of proposed allotment 66 on Plan of Development XXXXXX in accordance with the Subdivision Application approved by Brisbane City Council on XX XXXXXXXXX, XXXX subject to conditions.

Notes:

All dimensions and areas are subject to final registration of the survey plan.

The services, design contours and fill hatching shown hereon are from design drawings still to be approved by council.

Legend:

- Sewer Manhole
- Sewer Main
- Stormwater MH
- Stormwater Grate
- Drainage Swug
- Stormwater Gully
- Water Line
- Electrical Line UG
- Electrical Line AG
- Power Pole
- Telecom Line
- Telecom Pit
- Building Envelope
- Fence
- Stage Bdy
- Concrete
- Tree
- Retaining Wall
- Design Finished Surface Contour
- Design Fill Depth Contour

Stage 1
72 Acacia Road,
Karawatha

DISCLOSURE PLAN

LOT 66 ON SP280048

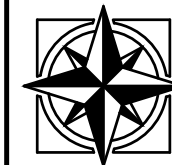
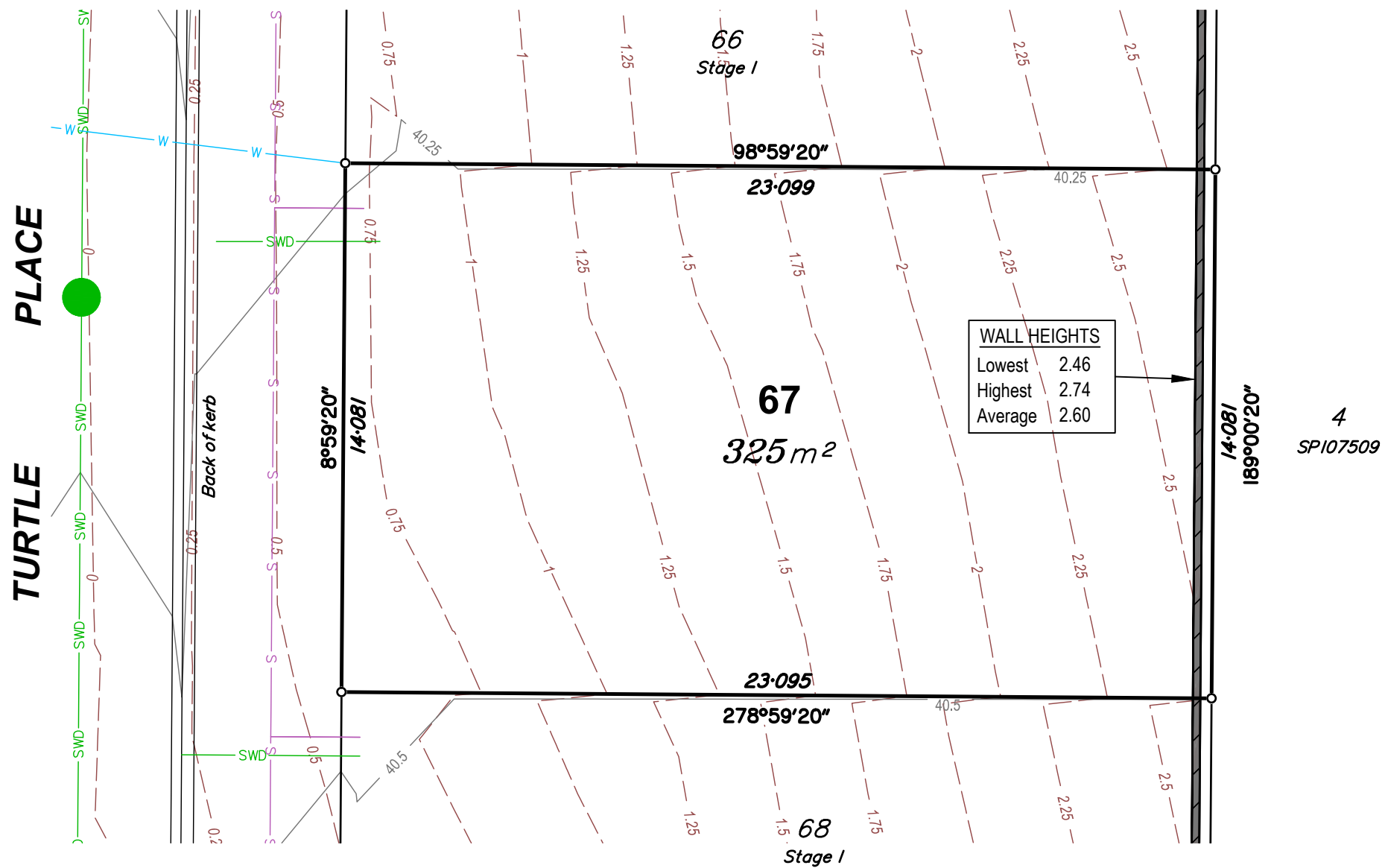
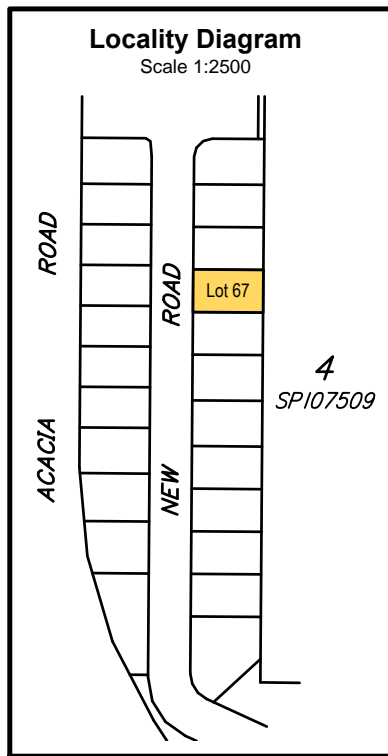
CLIENT

Solido Investments Nominees 1918 Pty Ltd

Issue	Description	Date	Appd.
E	Staging Revised	28/08/19	PR
F	Lots & Services updated	23/03/20	PR
G	Lot 74 updated	24/09/20	PR
H	Lot dimensions to MGA	27/7/21	PR

DRAWING NUMBER
4639-66

SCALE
1:200 (A3)



East Coast Surveys (Aust)
P.O. BOX 168 Capalaba QLD 4157
Ph (07) 3823 1029 Fax (07) 3823 2691
Email info@eastcoastsurveys.com.au

Local Authority: Brisbane City Council
Authority Ref. No: A004060334
RP Description: Lot 1 on RP54123

Parish: Yeerongpilly
County: Stanley
Level Datum: AHD(der)
Origin:
Horizontal Datum: RP54123
Contour Interval: 0.25m

Allotment Details:
This plan shows details of proposed allotment 67 on Plan of Development XXXXXX in accordance with the Subdivision Application approved by Brisbane City Council on XX XXXXXXXXXX, XXXX subject to conditions.

Notes:
All dimensions and areas are subject to final registration of the survey plan.
The services, design contours and fill hatching shown hereon are from design drawings still to be approved by council.

Legend:

Sewer Manhole	Building Envelope
Sewer Main	Fence
Stormwater MH	Stage Bdy
Stormwater Grate	Concrete
Drainage Swug	Tree
Stormwater Gully	Retaining Wall
Water Line	Design Finished Surface Contour
Electrical Line UG	Design Fill Depth Contour
Electrical Line AG	
Power Pole	
Telecom Line	
Telecom Pit	

Stage 1
72 Acacia Road,
Karawatha

DISCLOSURE PLAN
LOT 67 ON SP280048

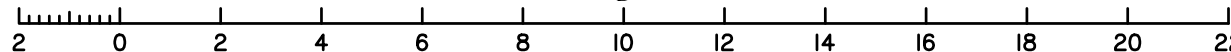
CLIENT
Solido Investments Nominees 1918 Pty Ltd

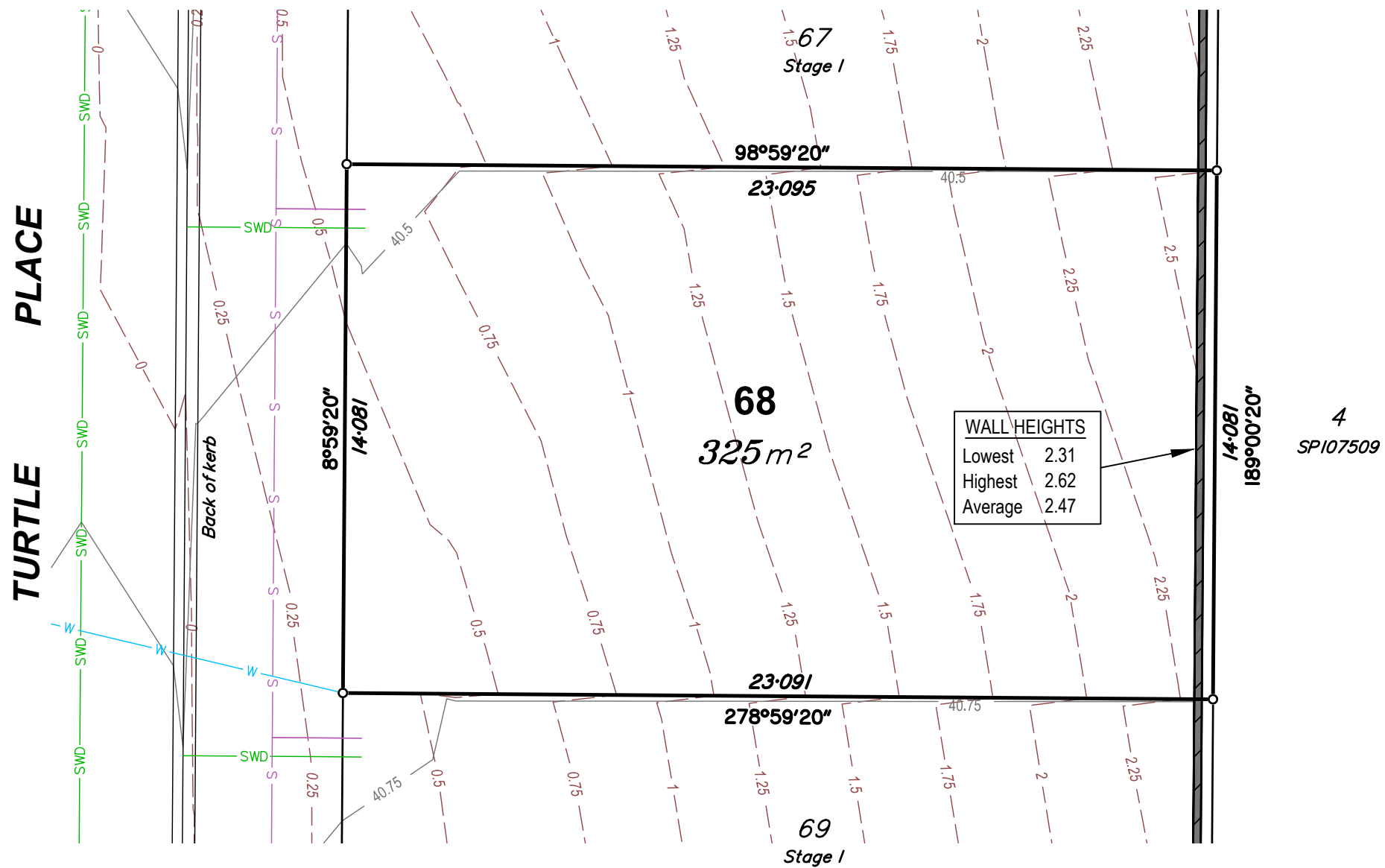
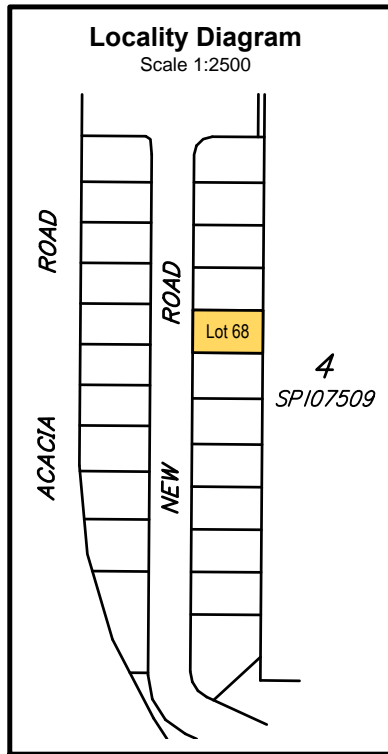
Issue	Description	Date	Appd.
E	Staging Revised	28/08/19	PR
F	Lots & Services updated	23/03/20	PR
G	Lot 74 updated	24/09/20	PR
H	Lot dimensions to MGA	27/7/21	PR

DRAWING NUMBER	SCALE
4639-67	1:200 (A3)

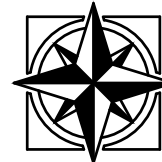
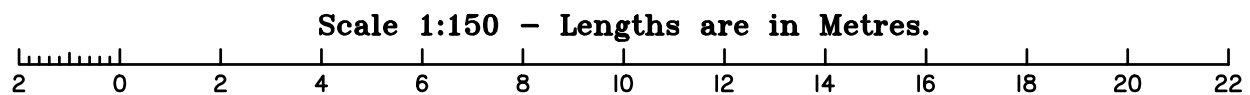
Compaction of the fill will be done in accordance with Australian Standard AS 3798-2007, and the level of Inspection during earthworks specified is Level 1 in accordance with AS1289 testing of soils for engineering purposes and AS 3798 guidelines for earthworks for commercial and residential developments.

Scale 1:150 - Lengths are in Metres.





Compaction of the fill will be done in accordance with Australian Standard AS 3798-2007, and the level of Inspection during earthworks specified is Level 1 in accordance with AS1289 testing of soils for engineering purposes and AS 3798 guidelines for earthworks for commercial and residential developments.



East Coast Surveys (Aust)
P.O. BOX 168 Capalaba QLD 4157
Ph (07) 3823 1029 Fax (07) 3823 2691
Email info@eastcoastsurveys.com.au

Local Authority: Brisbane City Council
Authority Ref. No: A004060334
RP Description: Lot 1 on RP54123

Parish: Yeerongpilly
County: Stanley
Level Datum: AHD(der)
Origin:
Horizontal Datum: RP54123
Contour Interval: 0.25m

Allotment Details:

This plan shows details of proposed allotment 68 on Plan of Development XXXXXX in accordance with the Subdivision Application approved by Brisbane City Council on XX XXXXXXXXXX, XXXX subject to conditions.

Notes:

All dimensions and areas are subject to final registration of the survey plan.

The services, design contours and fill hatching shown hereon are from design drawings still to be approved by council.

Legend:

- Sewer Manhole
- Sewer Main
- Stormwater MH
- Stormwater Grate
- Drainage Swug
- Stormwater Gully
- Water Line
- Electrical Line UG
- Electrical Line AG
- Power Pole
- Telecom Line
- Telecom Pit
- Building Envelope
- Fence
- Stage Bdy
- Concrete
- Tree
- Retaining Wall
- Design Finished Surface Contour
- Design Fill Depth Contour

Stage 1
72 Acacia Road,
Karawatha

DISCLOSURE PLAN

LOT 68 ON SP280048

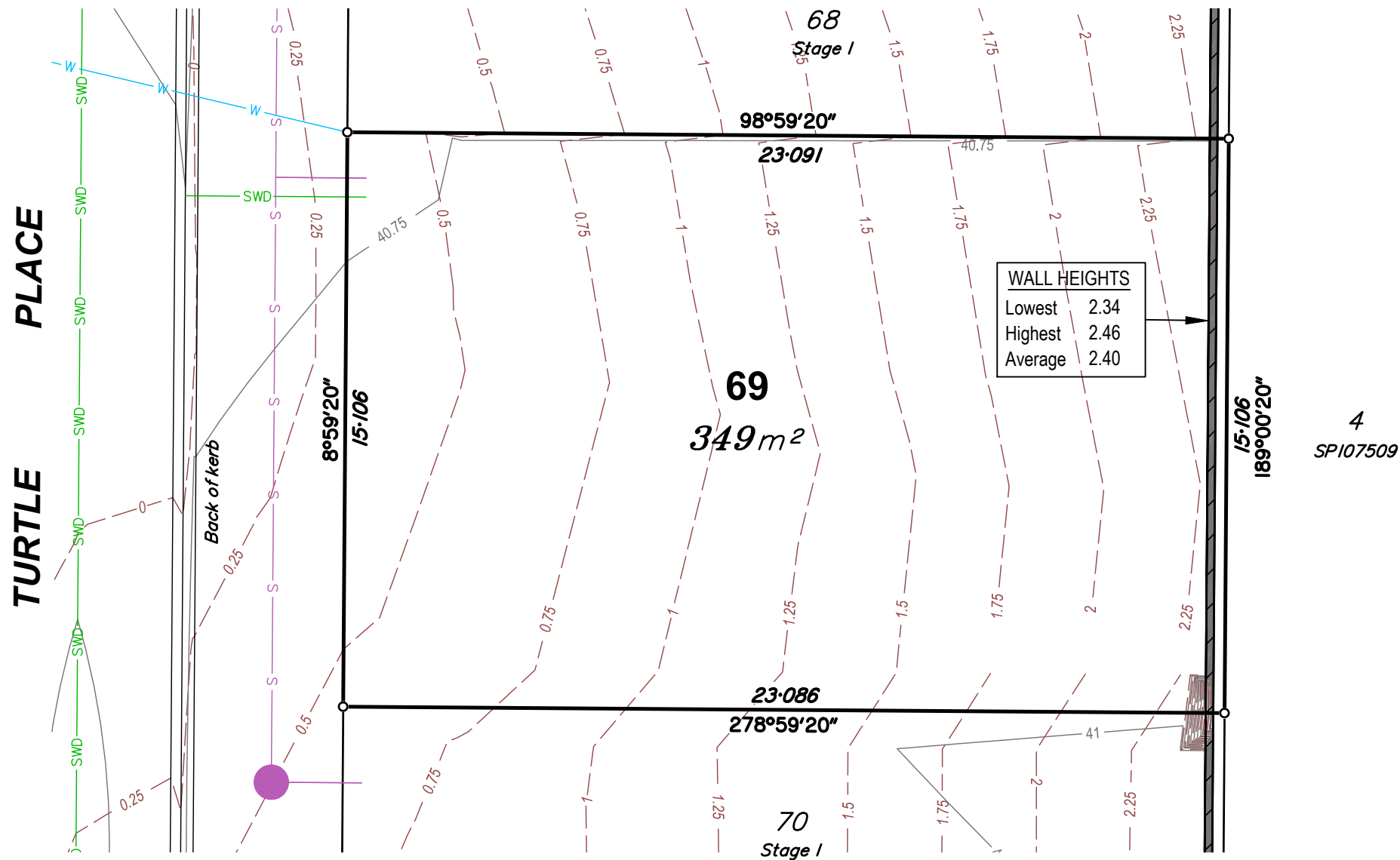
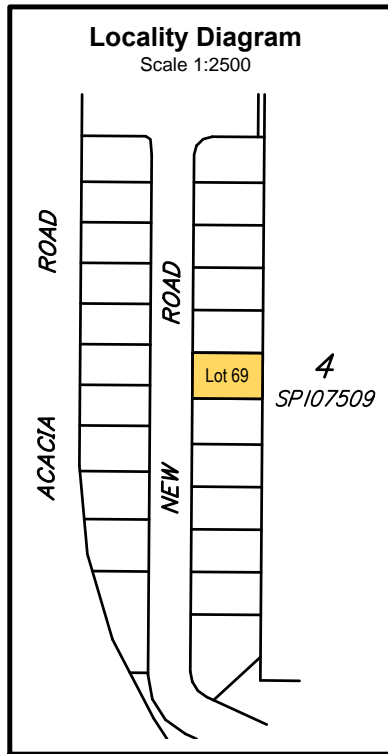
CLIENT

Solido Investments Nominees 1918 Pty Ltd

Issue	Description	Date	Appd.
E	Staging Revised	28/08/19	PR
F	Lots & Services updated	23/03/20	PR
G	Lot 74 updated	24/09/20	PR
H	Lot dimensions to MGA	27/7/21	PR

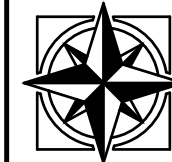
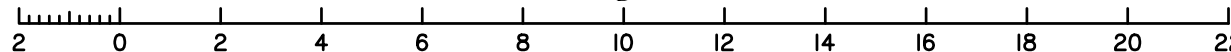
DRAWING NUMBER
4639-68

SCALE
1:200 (A3)



Compaction of the fill will be done in accordance with Australian Standard AS 3798-2007, and the level of Inspection during earthworks specified is Level 1 in accordance with AS1289 testing of soils for engineering purposes and AS 3798 guidelines for earthworks for commercial and residential developments.

Scale 1:150 - Lengths are in Metres.



East Coast Surveys (Aust)
P.O. BOX 168 Capalaba QLD 4157
Ph (07) 3823 1029 Fax (07) 3823 2691
Email info@eastcoastsurveys.com.au

Local Authority: Brisbane City Council
Authority Ref. No: A004060334
RP Description: Lot 1 on RP54123

Parish: Yeerongpilly
County: Stanley
Level Datum: AHD(der)
Origin:
Horizontal Datum: RP54123
Contour Interval: 0.25m

Allotment Details:
This plan shows details of proposed allotment 69 on Plan of Development XXXXXX in accordance with the Subdivision Application approved by Brisbane City Council on XX XXXXXXXXX, XXXX subject to conditions.

Notes:
All dimensions and areas are subject to final registration of the survey plan.
The services, design contours and fill hatching shown hereon are from design drawings still to be approved by council.

Legend:

- Sewer Manhole
- Sewer Main
- Stormwater MH
- Stormwater Grate
- Drainage Swug
- Stormwater Gully
- Water Line
- Electrical Line UG
- Electrical Line AG
- Power Pole
- Telecom Line
- Telecom Pit
- Building Envelope
- Fence
- Stage Bdy
- Concrete
- Tree
- Retaining Wall
- Design Finished Surface Contour
- Design Fill Depth Contour

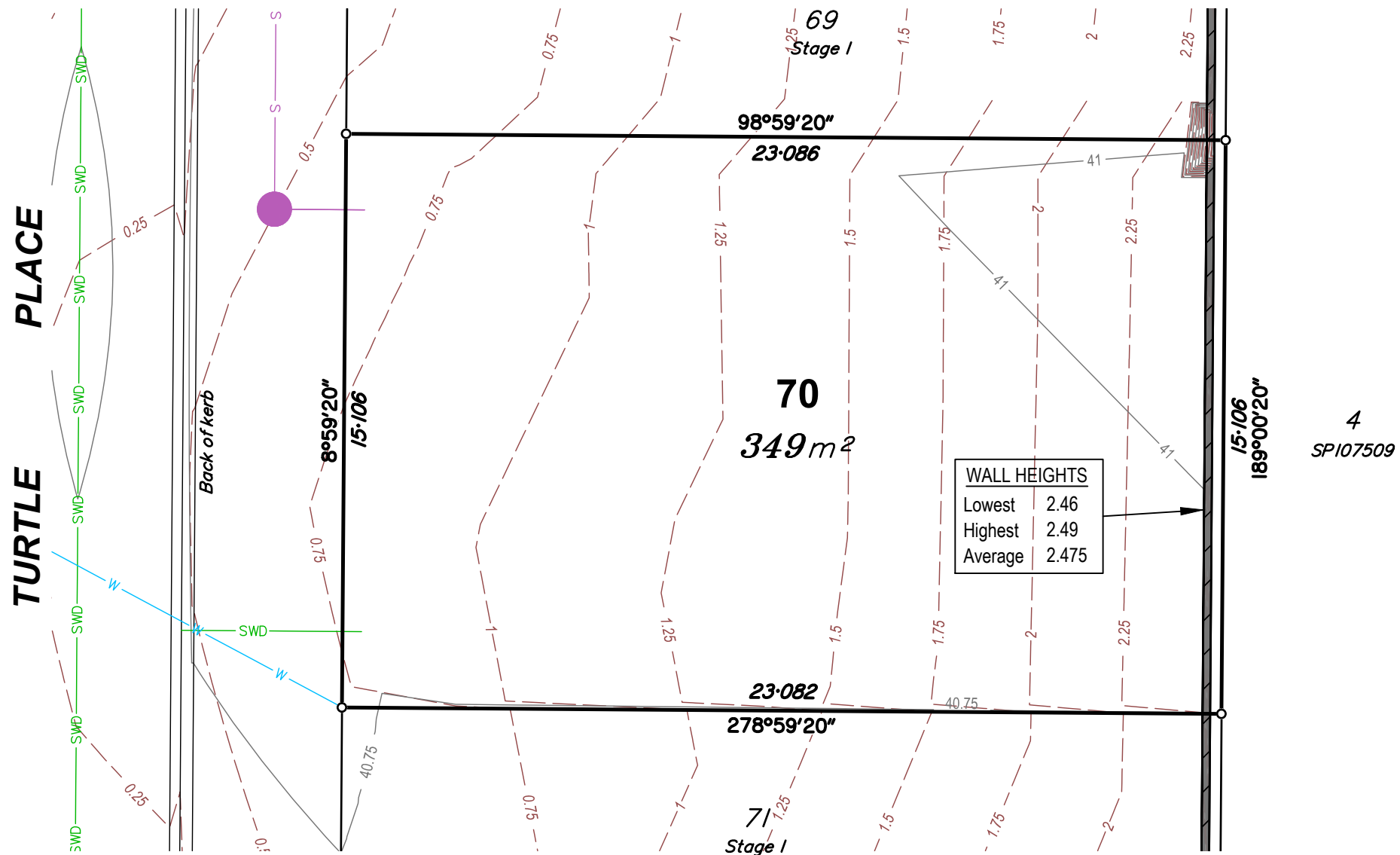
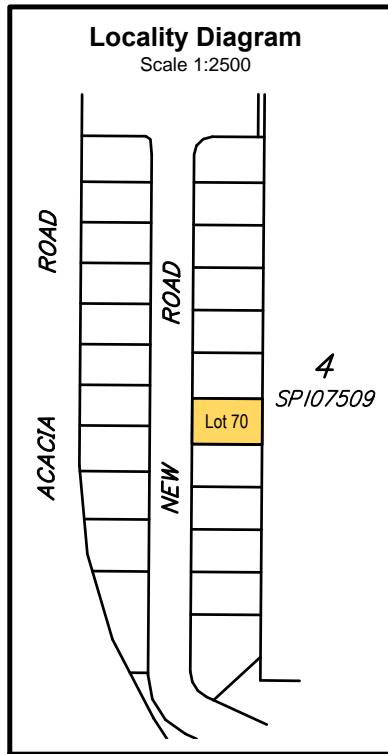
Stage 1
72 Acacia Road,
Karawatha

DISCLOSURE PLAN
LOT 69 ON SP280048

CLIENT
Solido Investments Nominees 1918 Pty Ltd

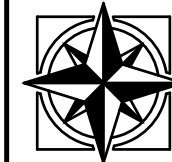
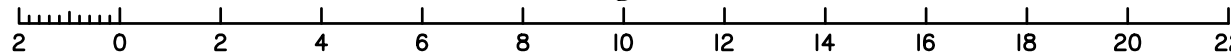
Issue	Description	Date	Appd.
E	Staging Revised	28/08/19	PR
F	Lots & Services updated	23/03/20	PR
G	Lot 74 updated	24/09/20	PR
H	Lot dimensions to MGA	27/7/21	PR

DRAWING NUMBER: 4639-69
SCALE: 1:200 (A3)



Compaction of the fill will be done in accordance with Australian Standard AS 3798-2007, and the level of Inspection during earthworks specified is Level 1 in accordance with AS1289 testing of soils for engineering purposes and AS 3798 guidelines for earthworks for commercial and residential developments.

Scale 1:150 - Lengths are in Metres.



East Coast Surveys (Aust)
Pty. Ltd. ACN 111 434 005

P.O. BOX 168 Capalaba QLD 4157
Ph (07) 3823 1029 Fax (07) 3823 2691
Email info@eastcoastsurveys.com.au

Local Authority: Brisbane City Council
Authority Ref. No: A004060334
RP Description: Lot 1 on RP54123

Parish: Yeerongpilly
County: Stanley
Level Datum: AHD(der)
Origin:
Horizontal Datum: RP54123
Contour Interval: 0.25m

Allotment Details:

This plan shows details of proposed allotment 70 on Plan of Development XXXXXX in accordance with the Subdivision Application approved by Brisbane City Council on XX XXXXXXXXX, XXXX subject to conditions.

Notes:

All dimensions and areas are subject to final registration of the survey plan.

The services, design contours and fill hatching shown hereon are from design drawings still to be approved by council.

Legend:

- Sewer Manhole
- Sewer Main
- Stormwater MH
- Stormwater Grate
- Drainage Swug
- Stormwater Gully
- Water Line
- Electrical Line UG
- Electrical Line AG
- Power Pole
- Telecom Line
- Telecom Pit
- Building Envelope
- Fence
- Stage Bdy
- Concrete
- Tree
- Retaining Wall
- Design Finished Surface Contour
- Design Fill Depth Contour

Stage 1
72 Acacia Road,
Karawatha

DISCLOSURE PLAN

LOT 70 ON SP280048

CLIENT

Solido Investments Nominees 1918 Pty Ltd

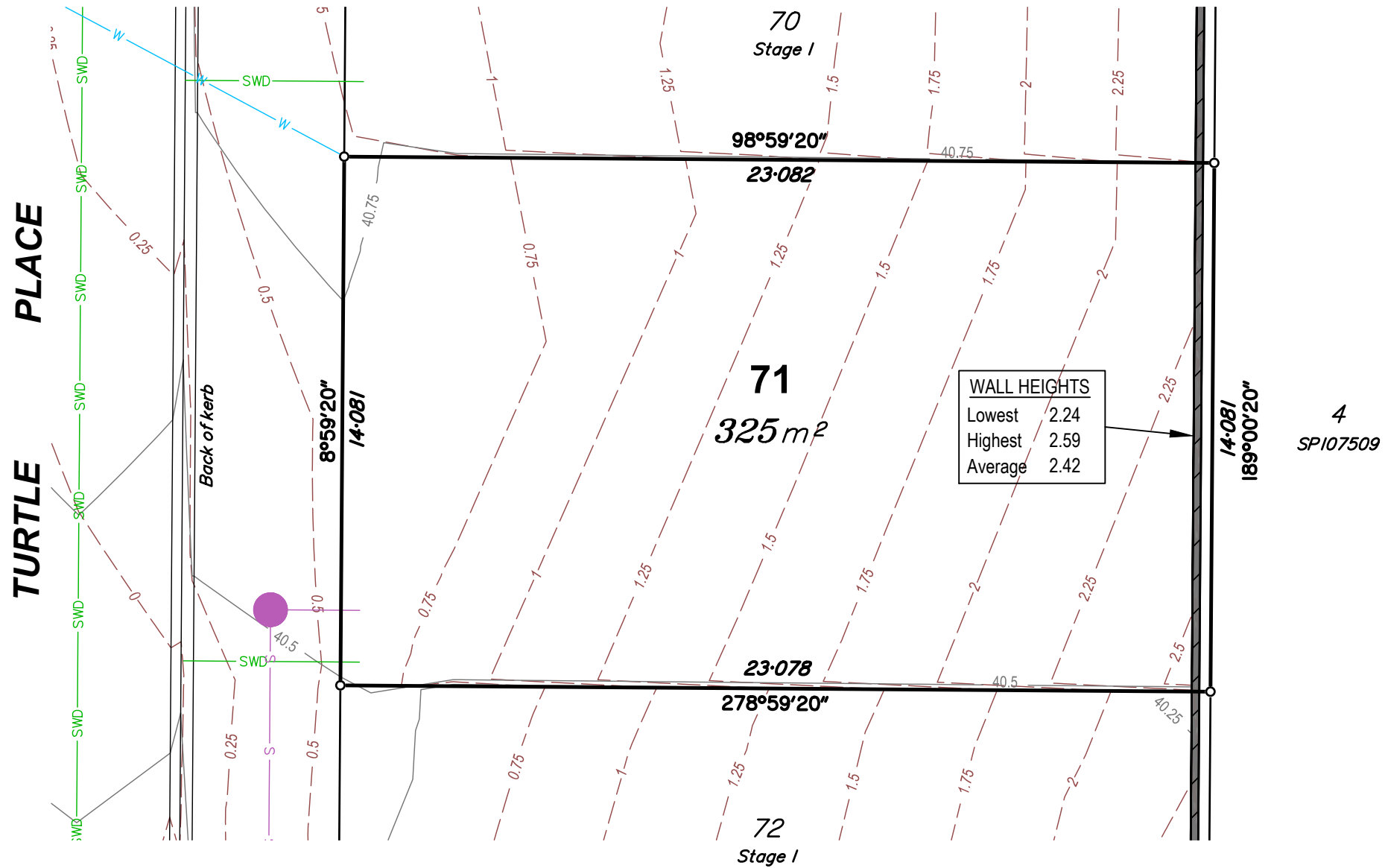
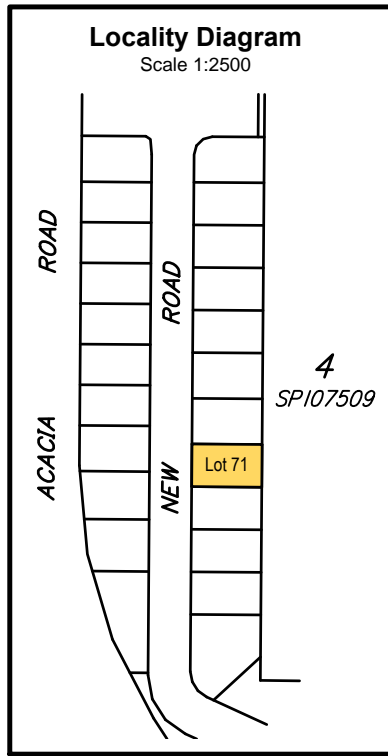
Issue	Description	Date	Appd.
E	Staging Revised	28/08/19	PR
F	Lots & Services updated	23/03/20	PR
G	Lot 74 updated	24/09/20	PR
H	Lot dimensions to MGA	27/7/21	PR

DRAWING NUMBER

4639-70

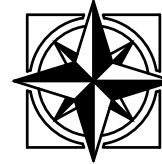
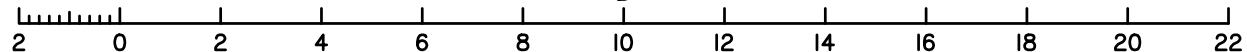
SCALE

1:200 (A3)



Compaction of the fill will be done in accordance with Australian Standard AS 3798-2007, and the level of Inspection during earthworks specified is Level 1 in accordance with AS1289 testing of soils for engineering purposes and AS 3798 guidelines for earthworks for commercial and residential developments.

Scale 1:150 - Lengths are in Metres.



East Coast Surveys (Aust)
Pty. Ltd. ACN 111 434 025

P.O. BOX 168 Capalaba QLD 4157
Ph (07) 3823 1029 Fax (07) 3823 2691
Email info@eastcoastsurveys.com.au

Local Authority: Brisbane City Council
Authority Ref. No: A004060334
RP Description: Lot 1 on RP54123

Parish: Yeerongpilly
County: Stanley
Level Datum: AHD(der)
Origin:
Horizontal Datum: RP54123
Contour Interval: 0.25m

Allotment Details:

This plan shows details of proposed allotment 71 on Plan of Development XXXXXX in accordance with the Subdivision Application approved by Brisbane City Council on XX XXXXXXXXXX, XXXX subject to conditions.

Notes:

All dimensions and areas are subject to final registration of the survey plan.

The services, design contours and fill hatching shown hereon are from design drawings still to be approved by council.

Legend:

- Sewer Manhole
- Sewer Main
- Stormwater MH
- Stormwater Grate
- Drainage Swug
- Stormwater Gully
- Water Line
- Electrical Line UG
- Electrical Line AG
- Power Pole
- Telecom Line
- Telecom Pit
- Building Envelope
- Fence
- Stage Bdy
- Concrete
- Tree
- Retaining Wall
- Design Finished Surface Contour
- Design Fill Depth Contour

Stage 1
72 Acacia Road,
Karawatha

DISCLOSURE PLAN

LOT 71 ON SP280048

CLIENT

Solido Investments Nominees 1918 Pty Ltd

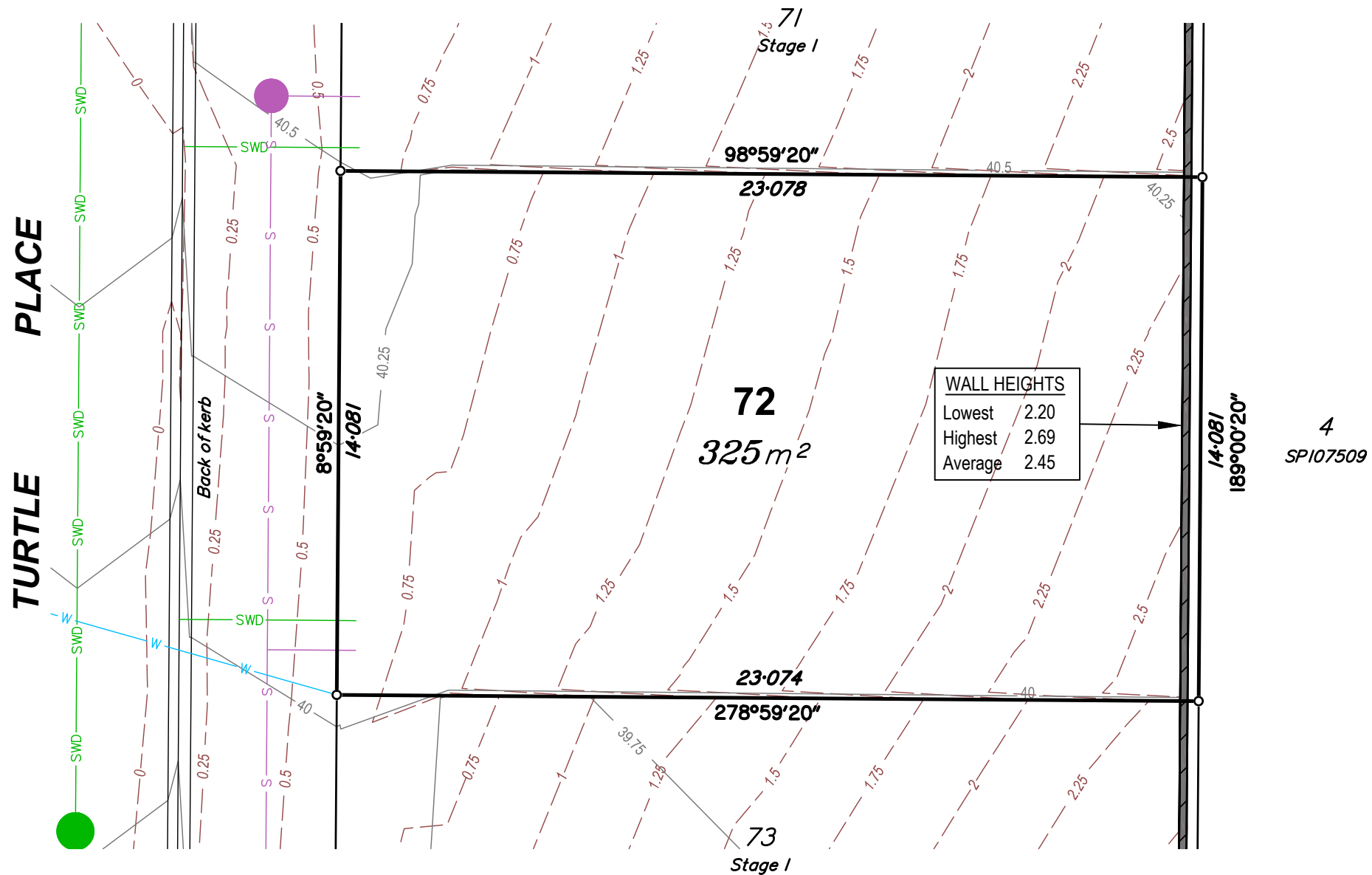
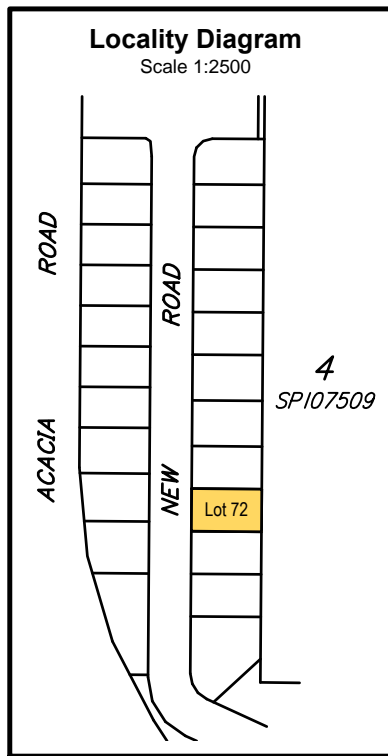
Issue	Description	Date	Appd.
E	Staging Revised	28/08/19	PR
F	Lots & Services updated	23/03/20	PR
G	Lot 74 updated	24/09/20	PR
H	Lot dimensions to MGA	27/7/21	PR

DRAWING NUMBER

4639-71

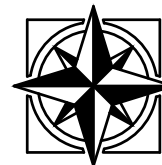
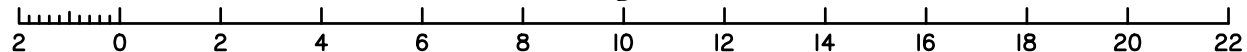
SCALE

1:200 (A3)



Compaction of the fill will be done in accordance with Australian Standard AS 3798-2007, and the level of Inspection during earthworks specified is Level 1 in accordance with AS1289 testing of soils for engineering purposes and AS 3798 guidelines for earthworks for commercial and residential developments.

Scale 1:150 - Lengths are in Metres.



East Coast Surveys (Aust)
Pty. Ltd. ACN 111 434 025

P.O. BOX 168 Capalaba QLD 4157
Ph (07) 3823 1029 Fax (07) 3823 2691
Email info@eastcoastsurveys.com.au

Local Authority: Brisbane City Council
Authority Ref. No: A004060334
RP Description: Lot 1 on RP54123

Parish: Yeerongpilly
County: Stanley
Level Datum: AHD(der)
Origin:
Horizontal Datum: RP54123
Contour Interval: 0.25m

Allotment Details:

This plan shows details of proposed allotment 72 on Plan of Development XXXXXX in accordance with the Subdivision Application approved by Brisbane City Council on XX XXXXXXXXX, XXXX subject to conditions.

Notes:

All dimensions and areas are subject to final registration of the survey plan.

The services, design contours and fill hatching shown hereon are from design drawings still to be approved by council.

Legend:

- Sewer Manhole
- Sewer Main
- Stormwater MH
- Stormwater Grate
- Drainage Swug
- Stormwater Gully
- Water Line
- Electrical Line UG
- Electrical Line AG
- Power Pole
- Telecom Line
- Telecom Pit
- Building Envelope
- Fence
- Stage Bdy
- Concrete
- Tree
- Retaining Wall
- Design Finished Surface Contour
- Design Fill Depth Contour

Stage 1
72 Acacia Road,
Karawatha

DISCLOSURE PLAN

LOT 72 ON SP280048

CLIENT

Solido Investments Nominees 1918 Pty Ltd

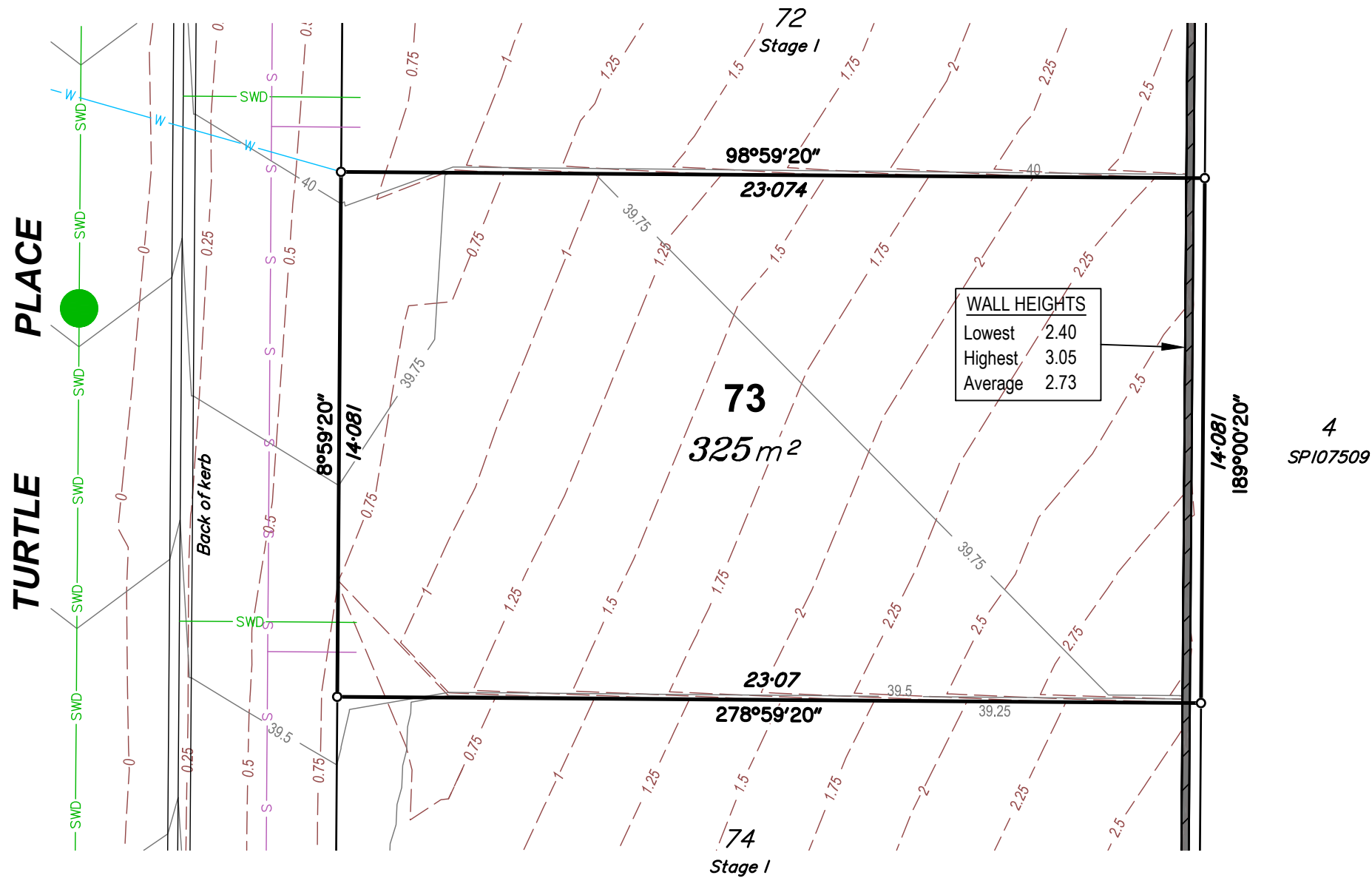
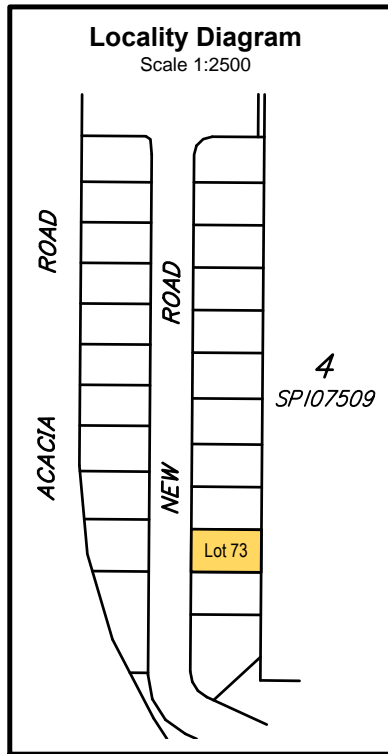
Issue	Description	Date	Appd.
E	Staging Revised	28/08/19	PR
F	Lots & Services updated	23/03/20	PR
G	Lot 74 updated	24/09/20	PR
H	Lot dimensions to MGA	27/7/21	PR

DRAWING NUMBER

4639-72

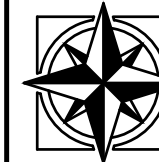
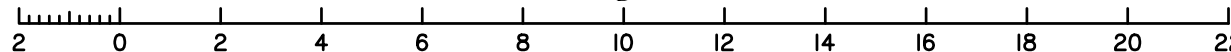
SCALE

1:200 (A3)



Compaction of the fill will be done in accordance with Australian Standard AS 3798-2007, and the level of Inspection during earthworks specified is Level 1 in accordance with AS1289 testing of soils for engineering purposes and AS 3798 guidelines for earthworks for commercial and residential developments.

Scale 1:150 – Lengths are in Metres.



East Coast Surveys (Aust)

P.O. BOX 168 Capalaba QLD 4157
Ph (07) 3823 1029 Fax (07) 3823 2691
Email info@eastcoastsurveys.com.au

Local Authority: Brisbane City Council
Authority Ref. No: A004060334
RP Description: Lot 1 on RP54123

Parish: Yeerongpilly
County: Stanley
Level Datum: AHD(der)
Origin:
Horizontal Datum: RP54123
Contour Interval: 0.25m

Allotment Details:

This plan shows details of proposed allotment 73 on Plan of Development XXXXXX in accordance with the Subdivision Application approved by Brisbane City Council on XX XXXXXXXXX, XXXX subject to conditions.

Notes:

All dimensions and areas are subject to final registration of the survey plan.

The services, design contours and fill hatching shown hereon are from design drawings still to be approved by council.

Legend:

- Sewer Manhole
- Sewer Main
- Stormwater MH
- Stormwater Grate
- Drainage Swug
- Stormwater Gully
- Water Line
- Electrical Line UG
- Electrical Line AG
- Power Pole
- Telecom Line
- Telecom Pit
- Building Envelope
- Fence
- Stage Bdy
- Concrete
- Tree
- Retaining Wall
- Design Finished Surface Contour
- Design Fill Depth Contour

Stage 1
72 Acacia Road,
Karawatha

DISCLOSURE PLAN

LOT 73 ON SP280048

CLIENT

Solido Investments Nominees 1918 Pty Ltd

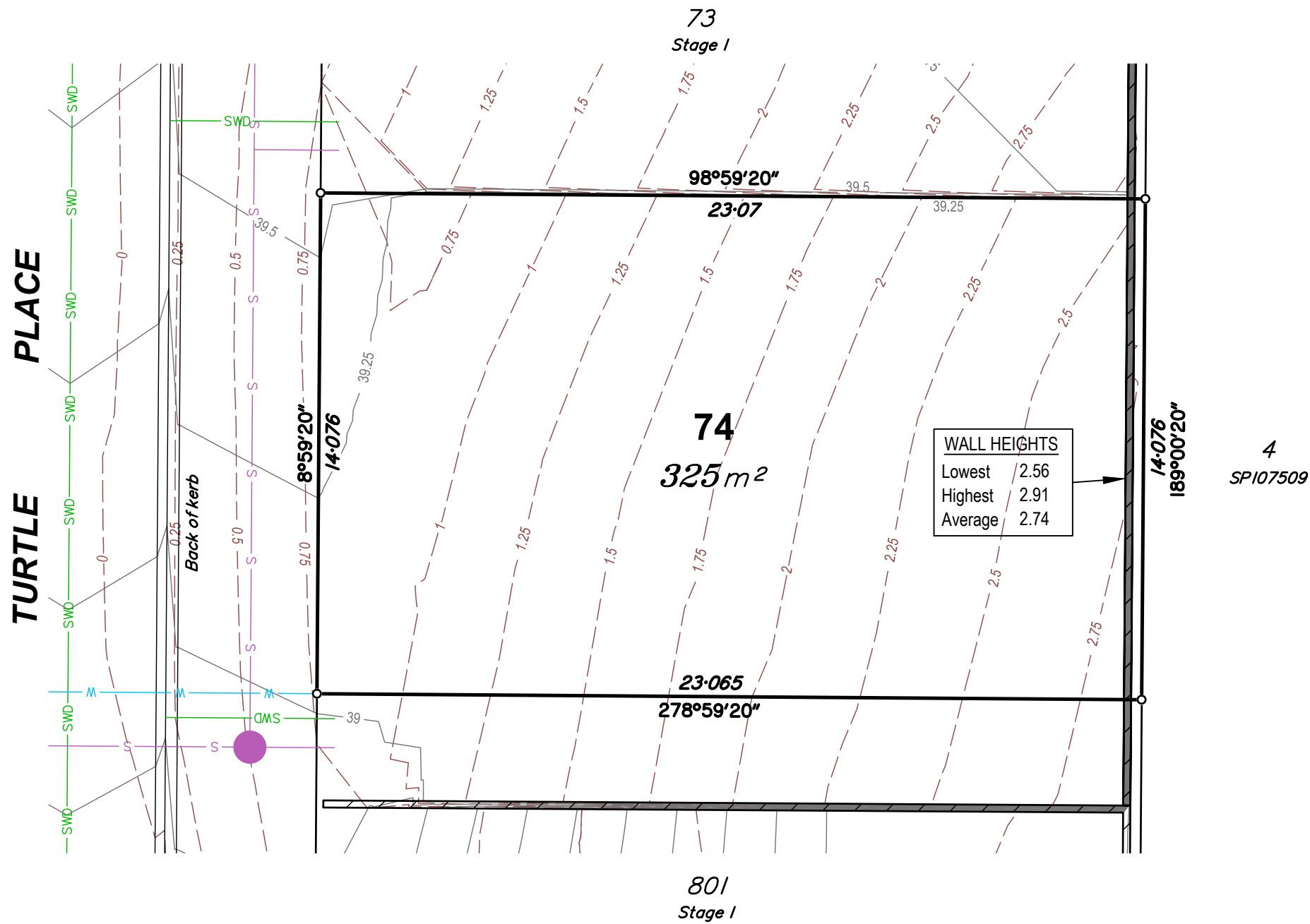
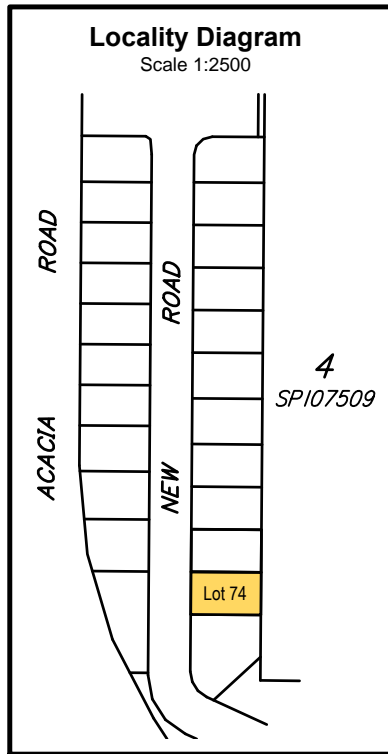
Issue	Description	Date	Appd.
E	Staging Revised	28/08/19	PR
F	Lots & Services updated	23/03/20	PR
G	Lot 74 updated	24/09/20	PR
H	Lot dimensions to MGA	27/7/21	PR

DRAWING NUMBER

4639-73

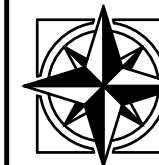
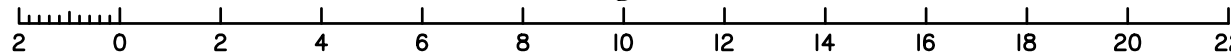
SCALE

1:200 (A3)



Compaction of the fill will be done in accordance with Australian Standard AS 3798-2007, and the level of Inspection during earthworks specified is Level 1 in accordance with AS1289 testing of soils for engineering purposes and AS 3798 guidelines for earthworks for commercial and residential developments.

Scale 1:150 - Lengths are in Metres.



East Coast Surveys (Aust)

P.O. BOX 168 Capalaba QLD 4157
Ph (07) 3823 1029 Fax (07) 3823 2691
Email info@eastcoastsurveys.com.au

Local Authority: Brisbane City Council
Authority Ref. No: A004060334
RP Description: Lot 1 on RP54123

Parish: Yeerongpilly
County: Stanley
Level Datum: AHD(der)
Origin:
Horizontal Datum: RP54123
Contour Interval: 0.25m

Allotment Details:

This plan shows details of proposed allotment 74 on Plan of Development XXXXXX in accordance with the Subdivision Application approved by Brisbane City Council on XX XXXXXXXXX, XXXX subject to conditions.

Notes:

All dimensions and areas are subject to final registration of the survey plan.

The services, design contours and fill hatching shown hereon are from design drawings still to be approved by council.

Legend:

- Sewer Manhole
- Sewer Main
- Stormwater MH
- Stormwater Grate
- Drainage Swug
- Stormwater Gully
- Water Line
- Electrical Line UG
- Electrical Line AG
- Power Pole
- Telecom Line
- Telecom Pit
- Building Envelope
- Fence
- Stage Bdy
- Concrete
- Tree
- Retaining Wall
- Design Finished Surface Contour
- Design Fill Depth Contour

Stage 1
72 Acacia Road,
Karawatha

DISCLOSURE PLAN

LOT 74 ON SP280048

CLIENT

Solido Investments Nominees 1918 Pty Ltd

Issue	Description	Date	Appd.
E	Staging Revised	28/08/19	PR
F	Lots & Services updated	23/03/20	PR
G	Lot 74 updated	24/09/20	PR
H	Lot dimensions to MGA	27/7/21	PR

DRAWING NUMBER

4639-74

SCALE

1:200 (A3)